

HIGHLIGHTS OF PRESCRIBING INFORMATION

These highlights do not include all the information needed to use TRUXIMA safely and effectively. See full prescribing information for TRUXIMA.

TRUXIMA® (rituximab-abbs) injection, for intravenous use

Initial U.S. Approval: 2018

TRUXIMA (rituximab-abbs) is biosimilar* to RITUXAN® (rituximab)

WARNING: FATAL INFUSION-RELATED REACTIONS, SEVERE MUCOCUTANEOUS REACTIONS, HEPATITIS B VIRUS REACTIVATION and PROGRESSIVE MULTIFOCAL LEUKOENCEPHALOPATHY

See full prescribing information for complete boxed warning.

- **Fatal infusion-related reactions within 24 hours of rituximab infusion; approximately 80% of fatal reactions occurred with first infusion. Monitor patients and discontinue TRUXIMA infusion for severe reactions (5.1).**
- **Severe mucocutaneous reactions, some with fatal outcomes (5.2).**
- **Hepatitis B virus (HBV) reactivation, in some cases resulting in fulminant hepatitis, hepatic failure, and death (5.3).**
- **Progressive multifocal leukoencephalopathy (PML) resulting in death (5.4).**

RECENT MAJOR CHANGES

Indications and Usage, Pemphigus Vulgaris (1.5)	06/2025
Dosage and Administration (2.7, 2.8)	06/2025
Warnings and Precautions (5.1, 5.12)	06/2025

INDICATIONS AND USAGE

TRUXIMA is a CD20-directed cytolytic antibody indicated for the treatment of:

- Adult patients with Non-Hodgkin's Lymphoma (NHL) (1.1).
 - Relapsed or refractory, low grade or follicular, CD20-positive B-cell NHL as a single agent.
 - Previously untreated follicular, CD20-positive, B-cell NHL in combination with first line chemotherapy and, in patients achieving a complete or partial response to a rituximab product in combination with chemotherapy, as single-agent maintenance therapy.
 - Non-progressing (including stable disease), low-grade, CD20-positive, B-cell NHL as a single agent after first-line cyclophosphamide, vincristine, and prednisone (CVP) chemotherapy.
 - Previously untreated diffuse large B-cell, CD20-positive NHL in combination with (cyclophosphamide, doxorubicin, vincristine, and prednisone) (CHOP) or other anthracycline-based chemotherapy regimens.
- Adult patients with Chronic Lymphocytic Leukemia (CLL) (1.2).
 - Previously untreated and previously treated CD20-positive CLL in combination with fludarabine and cyclophosphamide (FC).
- Rheumatoid Arthritis (RA) in combination with methotrexate in adult patients with moderately-to-severely-active RA who have inadequate response to one or more TNF antagonist therapies (1.3).
- Granulomatosis with Polyangiitis (GPA) (Wegener's Granulomatosis) and Microscopic Polyangiitis (MPA) in adult patients in combination with glucocorticoids (1.4).
- Moderate to severe Pemphigus Vulgaris (PV) in adult patients (1.5)

DOSAGE AND ADMINISTRATION

- Administer only as an intravenous infusion (2.1).
- Do not administer as an intravenous push or bolus (2.1).
- TRUXIMA should only be administered by a healthcare professional with appropriate medical support to manage severe infusion-related reactions that can be fatal if they occur (2.1).
- The dose for adult B-cell NHL is 375 mg/m² (2.2).
- The dose for CLL is 375 mg/m² in the first cycle and 500 mg/m² in cycles 2 to 6, in combination with FC, administered every 28 days (2.3).
- The dose as a component of Zevalin® (ibrutinomab tiuxetan) Therapeutic Regimen is 250 mg/m² (2.4).

- The dose for RA in combination with methotrexate is two-1,000 mg intravenous infusions separated by 2 weeks (one course) every 24 weeks or based on clinical evaluation, but not sooner than every 16 weeks. Methylprednisolone 100 mg intravenous or equivalent glucocorticoid is recommended 30 minutes prior to each infusion (2.5).
- The induction dose for adult patients with active GPA and MPA in combination with glucocorticoids is 375 mg/m² once weekly for 4 weeks. The follow up dose for adult patients with GPA and MPA who have achieved disease control with induction treatment, in combination with glucocorticoids is two 500 mg intravenous infusions separated by two weeks, followed by a 500 mg intravenous infusion every 6 months thereafter based on clinical evaluation (2.6).
- The dose for PV is two-1,000 mg intravenous infusions separated by 2 weeks in combination with a tapering course of glucocorticoids, then a 500 mg intravenous infusion at Month 12 and every 6 months thereafter or based on clinical evaluation. Dose upon relapse is a 1,000 mg intravenous infusion with considerations to resume or increase the glucocorticoid dose based on clinical evaluation. Subsequent infusions may be no sooner than 16 weeks after the previous infusion (2.7). Methylprednisolone 100 mg intravenous or equivalent glucocorticoid is recommended 30 minutes prior to each infusion (2.8).

DOSAGE FORMS AND STRENGTHS

Injection: 100 mg/10 mL (10 mg/mL) and 500 mg/50 mL (10 mg/mL) solution in single-dose vials (3)

CONTRAINDICATIONS

None (4)

WARNINGS AND PRECAUTIONS

- Tumor lysis syndrome: Administer aggressive intravenous hydration, anti-hyperuricemic agents, monitor renal function (5.5).
- Infections: Withhold TRUXIMA and institute appropriate anti-infective therapy (5.6).
- Cardiac adverse reactions: Discontinue infusions in case of serious or life-threatening events (5.7).
- Renal toxicity: Discontinue in patients with rising serum creatinine or oliguria (5.8).
- Bowel obstruction and perforation: Consider and evaluate for abdominal pain, vomiting, or related symptoms (5.9).
- Immunizations: Live virus vaccinations prior to or during TRUXIMA treatment not recommended (5.10).
- Embryo-Fetal toxicity: Can cause fetal harm. Advise females of reproductive potential of the potential risk to a fetus and use of effective contraception (5.11).

ADVERSE REACTIONS

Most common adverse reactions in clinical trials were:

- NHL (greater than or equal to 25%): infusion-related reactions, fever, lymphopenia, chills, infection, and asthenia (6.1).
- CLL (greater than or equal to 25%): infusion-related reactions and neutropenia (6.1).
- RA (greater than or equal to 10%): upper respiratory tract infection, nasopharyngitis, urinary tract infection, and bronchitis (other important adverse reactions include infusion-related reactions, serious infections, and cardiovascular events) (6.1).
- GPA and MPA (greater than or equal to 15 %): infections, nausea, diarrhea, headache, muscle spasms, anemia, peripheral edema, infusion-related reactions (6.1).
- PV (greater than or equal to 15%): infusion-related reactions, depression, upper respiratory tract infection/nasopharyngitis, headache (other important adverse reactions include infections) (6.1).

To report SUSPECTED ADVERSE REACTIONS, contact Teva Pharmaceuticals at 1-888-483-8279 or FDA at 1-800-FDA-1088 or www.fda.gov/medwatch.

DRUG INTERACTIONS

Renal toxicity when used in combination with cisplatin (5.8).

USE IN SPECIFIC POPULATIONS

- Lactation: Advise not to breastfeed (8.2).
- Geriatric Use: In CLL patients older than 70 years of age, exploratory analyses suggest no benefit with the addition of rituximab to FC (8.5).

See 17 for PATIENT COUNSELING INFORMATION and Medication Guide.

* Biosimilar means that the biological product is approved based on data demonstrating that it is highly similar to an FDA-approved biological product, known as a reference product, and that there are no clinically meaningful differences between the biosimilar product and the reference product. Biosimilarity of TRUXIMA has been demonstrated for the condition(s) of use (e.g. indication(s), dosing regimen(s)), strength(s), dosage form(s), and route(s) of administration described in its Full Prescribing Information.

Revised: 06/2025

FULL PRESCRIBING INFORMATION: CONTENTS*

WARNING: FATAL INFUSION-RELATED REACTIONS, SEVERE MUCOCUTANEOUS REACTIONS, HEPATITIS B VIRUS REACTIVATION and PROGRESSIVE MULTIFOCAL LEUKOENCEPHALOPATHY

1 INDICATIONS AND USAGE

- 1.1 Non-Hodgkin's Lymphoma (NHL)
- 1.2 Chronic Lymphocytic Leukemia (CLL)
- 1.3 Rheumatoid Arthritis (RA)
- 1.4 Granulomatosis with Polyangiitis (GPA) (Wegener's Granulomatosis) and Microscopic Polyangiitis (MPA)
- 1.5 Pemphigus Vulgaris (PV)

2 DOSAGE AND ADMINISTRATION

- 2.1 Important Dosing Information
- 2.2 Recommended Dose for Non-Hodgkin's Lymphoma (NHL)
- 2.3 Recommended Dose for Chronic Lymphocytic Leukemia (CLL)
- 2.4 Recommended Dose as a Component of Zevalin® for treatment of NHL
- 2.5 Recommended Dose for Rheumatoid Arthritis (RA)
- 2.6 Recommended Dose for Granulomatosis with Polyangiitis (GPA) (Wegener's Granulomatosis) and Microscopic Polyangiitis (MPA)
- 2.7 Recommended Dose for Pemphigus Vulgaris (PV)
- 2.8 Recommended Dose for Premedication and Prophylactic Medications
- 2.9 Administration and Storage

3 DOSAGE FORMS AND STRENGTHS

4 CONTRAINDICATIONS

5 WARNINGS AND PRECAUTIONS

- 5.1 Infusion-Related Reactions
- 5.2 Severe Mucocutaneous Reactions
- 5.3 Hepatitis B Virus (HBV) Reactivation
- 5.4 Progressive Multifocal Leukoencephalopathy (PML)
- 5.5 Tumor Lysis Syndrome (TLS)
- 5.6 Infections
- 5.7 Cardiovascular Adverse Reactions
- 5.8 Renal Toxicity
- 5.9 Bowel Obstruction and Perforation
- 5.10 Immunization
- 5.11 Embryo-Fetal Toxicity
- 5.12 Concomitant Use with Other Biologic Agents and DMARDs other than Methotrexate in RA, GPA and MPA, PV

- 5.13 Use in RA Patients Who Have Not Had Prior Inadequate Response to Tumor Necrosis Factor (TNF) Antagonists

6 ADVERSE REACTIONS

- 6.1 Clinical Trials Experience
- 6.2 Immunogenicity
- 6.3 Postmarketing Experience

7 DRUG INTERACTIONS

8 USE IN SPECIFIC POPULATIONS

- 8.1 Pregnancy
- 8.2 Lactation
- 8.3 Females and Males of Reproductive Potential
- 8.4 Pediatric Use
- 8.5 Geriatric Use

11 DESCRIPTION

12 CLINICAL PHARMACOLOGY

- 12.1 Mechanism of Action
- 12.2 Pharmacodynamics
- 12.3 Pharmacokinetics

13 NONCLINICAL TOXICOLOGY

- 13.1 Carcinogenesis, Mutagenesis, Impairment of Fertility

14 CLINICAL STUDIES

- 14.1 Relapsed or Refractory, Low-Grade or Follicular, CD20-Positive, B-Cell NHL
- 14.2 Previously Untreated, Low-Grade or Follicular, CD20-Positive, B-Cell NHL
- 14.3 Diffuse Large B-Cell NHL (DLBCL)
- 14.4 Ninety-Minute Infusions in Previously Untreated Follicular NHL and DLBCL
- 14.5 Chronic Lymphocytic Leukemia (CLL)
- 14.6 Rheumatoid Arthritis (RA)
- 14.7 Granulomatosis with Polyangiitis (GPA) (Wegener's Granulomatosis) and Microscopic Polyangiitis (MPA)
- 14.8 Pemphigus Vulgaris (PV)

16 HOW SUPPLIED/STORAGE AND HANDLING

17 PATIENT COUNSELING INFORMATION

*Sections or subsections omitted from the full prescribing information are not listed.

FULL PRESCRIBING INFORMATION

WARNING: FATAL INFUSION-RELATED REACTIONS, SEVERE MUCOCUTANEOUS REACTIONS, HEPATITIS B VIRUS REACTIVATION and PROGRESSIVE MULTIFOCAL LEUKOENCEPHALOPATHY

Infusion-Related Reactions

Administration of rituximab products can result in serious, including fatal, infusion-related reactions. Deaths within 24 hours of rituximab infusion have occurred. Approximately 80% of fatal infusion-related reactions occurred in association with the first infusion. Monitor patients closely. Discontinue TRUXIMA infusion for severe reactions and provide medical treatment for Grade 3 or 4 infusion-related reactions [see *Warnings and Precautions (5.1)*, *Adverse Reactions (6.1)*].

Severe Mucocutaneous Reactions

Severe, including fatal, mucocutaneous reactions can occur in patients receiving rituximab products [see *Warnings and Precautions (5.2)*].

Hepatitis B Virus (HBV) Reactivation

HBV reactivation can occur in patients treated with rituximab products, in some cases resulting in fulminant hepatitis, hepatic failure, and death. Screen all patients for HBV infection before treatment initiation, and monitor patients during and after treatment with TRUXIMA. Discontinue TRUXIMA and concomitant medications in the event of HBV reactivation [see *Warnings and Precautions (5.3)*].

Progressive Multifocal Leukoencephalopathy (PML), including fatal PML, can occur in patients receiving rituximab products [see *Warnings and Precautions (5.4)* and *Adverse Reactions (6.1)*].

1 INDICATIONS AND USAGE

1.1 Non-Hodgkin's Lymphoma (NHL)

TRUXIMA is indicated for the treatment of adult patients with:

- Relapsed or refractory, low-grade or follicular, CD20-positive, B-cell NHL as a single agent.
- Previously untreated follicular, CD20-positive, B-cell NHL in combination with first line chemotherapy and, in patients achieving a complete or partial response to a rituximab product in combination with chemotherapy, as single-agent maintenance therapy.
- Non-progressing (including stable disease), low-grade, CD20-positive, B-cell NHL as a single agent after first-line cyclophosphamide, vincristine, and prednisone (CVP) chemotherapy.
- Previously untreated diffuse large B-cell, CD20-positive NHL in combination with cyclophosphamide, doxorubicin, vincristine, prednisone (CHOP) or other anthracycline-based chemotherapy regimens.

1.2 Chronic Lymphocytic Leukemia (CLL)

TRUXIMA, in combination with fludarabine and cyclophosphamide (FC), is indicated for the treatment of adult patients with previously untreated and previously treated CD20-positive CLL.

1.3 Rheumatoid Arthritis (RA)

TRUXIMA, in combination with methotrexate, is indicated for the treatment of adult patients with moderately-to-severely-active rheumatoid arthritis who have had an inadequate response to one or more TNF antagonist therapies.

1.4 Granulomatosis with Polyangiitis (GPA) (Wegener's Granulomatosis) and Microscopic Polyangiitis (MPA)

TRUXIMA, in combination with glucocorticoids, is indicated for the treatment of adult patients with Granulomatosis with Polyangiitis (GPA) (Wegener's Granulomatosis) and Microscopic Polyangiitis (MPA).

1.5 Pemphigus Vulgaris (PV)

TRUXIMA is indicated for the treatment of adult patients with moderate to severe pemphigus vulgaris.

2 DOSAGE AND ADMINISTRATION

2.1 Important Dosing Information

Administer only as an Intravenous Infusion [*see Dosage and Administration (2.8)*].

Do not administer as an intravenous push or bolus. TRUXIMA should only be administered by a healthcare professional with appropriate medical support to manage severe infusion-related reactions that can be fatal if they occur [*see Warnings and Precautions (5.1)*].

Premedicate before each infusion [*see Dosage and Administration (2.8)*].

Prior to First Infusion: Screen all patients for HBV infection by measuring HBsAg and anti-HBc before initiating treatment with TRUXIMA [*see Warnings and Precautions (5.3)*]. Obtain complete blood counts (CBC) including platelets prior to the first dose.

During TRUXIMA Therapy: In patients with lymphoid malignancies, during treatment with TRUXIMA monotherapy, obtain complete blood counts (CBC) with differential and platelet counts prior to each TRUXIMA course. During treatment with TRUXIMA and chemotherapy, obtain CBC with differential and platelet counts at weekly to monthly intervals and more frequently in patients who develop cytopenias [*see Adverse Reactions (6.1)*]. In patients with RA, GPA or MPA, obtain CBC with differential and platelet counts at two to four month intervals during TRUXIMA therapy. Continue to monitor for cytopenias after final dose and until resolution.

- **First Infusion:**

Standard Infusion: Initiate infusion at a rate of 50 mg/hr. In the absence of infusion toxicity, increase infusion rate by 50 mg/hr increments every 30 minutes, to a maximum of 400 mg/hr.

- **Subsequent Infusions:**

Standard Infusion: Initiate infusion at a rate of 100 mg/hr. In the absence of infusion toxicity, increase rate by 100 mg/hr increments at 30-minute intervals, to a maximum of 400 mg/hr.

For Previously Untreated Follicular NHL and DLBCL adult patients:

If patients did not experience a Grade 3 or 4 infusion-related adverse event during Cycle 1, a 90-minute infusion can be administered in Cycle 2 with a glucocorticoid-containing chemotherapy regimen.

Initiate at a rate of 20% of the total dose given in the first 30 minutes and the remaining 80% of the total dose given over the next 60 minutes. If the 90-minute infusion is tolerated in Cycle 2, the same rate can be used when administering the remainder of the treatment regimen (through Cycle 6 or 8).

Patients who have clinically significant cardiovascular disease or who have a circulating lymphocyte count greater than or equal to 5,000/mm³ before Cycle 2 should not be administered the 90-minute infusion [*see Clinical Studies (14.4)*].

- Interrupt the infusion or slow the infusion rate for infusion-related reactions [*see Boxed Warning, Warnings and Precautions (5.1)*]. Continue the infusion at one-half the previous rate upon improvement of symptoms.

2.2 Recommended Dose for Non-Hodgkin's Lymphoma (NHL)

The recommended dose is 375 mg/m² as an intravenous infusion according to the following schedules:

- **Relapsed or Refractory, Low-Grade or Follicular, CD20-Positive, B-Cell NHL**
Administer once weekly for 4 or 8 doses.
- **Retreatment for Relapsed or Refractory, Low-Grade or Follicular, CD20-Positive, B-Cell NHL**
Administer once weekly for 4 doses.
- **Previously Untreated, Follicular, CD20-Positive, B-Cell NHL**
Administer on Day 1 of each cycle of chemotherapy for up to 8 doses. In patients with complete or partial response, initiate TRUXIMA maintenance eight weeks following completion of a rituximab product in combination with chemotherapy. Administer TRUXIMA as a single-agent every 8 weeks for 12 doses.
- **Non-progressing, Low-Grade, CD20-Positive, B-Cell NHL, after first-line CVP chemotherapy**
Following completion of 6 to 8 cycles of CVP chemotherapy, administer once weekly for 4 doses at 6-month intervals to a maximum of 16 doses.
- **Diffuse Large B-Cell NHL**
Administer on Day 1 of each cycle of chemotherapy for up to 8 infusions.

2.3 Recommended Dose for Chronic Lymphocytic Leukemia (CLL)

The recommended dose is 375 mg/m² the day prior to the initiation of FC chemotherapy, then 500 mg/m² on Day 1 of cycles 2 to 6 (every 28 days).

2.4 Recommended Dose as a Component of Zevalin® for treatment of NHL

- When used as part of the Zevalin therapeutic regimen, infuse 250 mg/m² in accordance with the Zevalin package insert. Refer to the Zevalin package insert for full prescribing information regarding the Zevalin therapeutic regimen.

2.5 Recommended Dose for Rheumatoid Arthritis (RA)

- Administer TRUXIMA as two-1,000 mg intravenous infusions separated by 2 weeks.
- Glucocorticoids administered as methylprednisolone 100 mg intravenous or its equivalent 30 minutes prior to each infusion are recommended to reduce the incidence and severity of infusion-related reactions.
- Subsequent courses should be administered every 24 weeks or based on clinical evaluation, but not sooner than every 16 weeks.
- TRUXIMA is given in combination with methotrexate.

2.6 Recommended Dose for Granulomatosis with Polyangiitis (GPA) (Wegener's Granulomatosis) and Microscopic Polyangiitis (MPA)

Induction Treatment of Adult Patients with Active GPA/MPA

- Administer TRUXIMA as a 375 mg/m² intravenous infusion once weekly for 4 weeks for patients with active GPA or MPA.
- Glucocorticoids administered as methylprednisolone 1,000 mg intravenously per day for 1 to 3 days followed by oral prednisone as per clinical practice. This regimen should begin within 14 days prior to or with the initiation of TRUXIMA and may continue during and after the 4 week induction course of TRUXIMA treatment.

Follow up Treatment of Adult Patients with GPA/MPA who have achieved disease control with induction treatment

- Administer TRUXIMA as two 500 mg intravenous infusions separated by two weeks, followed by a 500 mg intravenous infusion every 6 months thereafter based on clinical evaluation.
- If induction treatment of active disease was with a rituximab product, initiate follow up treatment with TRUXIMA within 24 weeks after the last induction infusion with a rituximab product or based on clinical evaluation, but no sooner than 16 weeks after the last induction infusion with a rituximab product.
- If induction treatment of active disease was with other standard of care immunosuppressants, initiate TRUXIMA follow up treatment within the 4 week period that follows achievement of disease control.

2.7 Recommended Dose for Pemphigus Vulgaris (PV)

- Administer TRUXIMA as two-1,000 mg intravenous infusions separated by 2 weeks in combination with a tapering course of glucocorticoids.
- **Maintenance treatment**
Administer TRUXIMA as a 500 mg intravenous infusion at Month 12 and every 6 months thereafter or based on clinical evaluation.
- **Treatment of relapse**
Administer TRUXIMA as a 1,000 mg intravenous infusion on relapse, and consider resuming or increasing the glucocorticoid dose based on clinical evaluation.

Subsequent infusions of TRUXIMA may be administered no sooner than 16 weeks following the previous infusion.

2.8 Recommended Dose for Premedication and Prophylactic Medications

Premedicate with acetaminophen and an antihistamine before each infusion of TRUXIMA. For adult patients administered TRUXIMA according to the 90-minute infusion rate, the glucocorticoid component of their chemotherapy regimen should be administered prior to infusion [see *Clinical Studies (14.4)*].

For RA, GPA and MPA, and PV patients, methylprednisolone 100 mg intravenously or its equivalent is recommended 30 minutes prior to each infusion.

Provide prophylaxis treatment for *Pneumocystis jirovecii* pneumonia (PCP) and herpes virus infections for patients with CLL during treatment and for up to 12 months following treatment as appropriate [see *Warnings and Precautions (5.6)*].

PCP prophylaxis is also recommended for patients with GPA and MPA during treatment and for at least 6 months following the last TRUXIMA infusion.

PCP prophylaxis should be considered for patients with PV during and following TRUXIMA treatment.

2.9 Administration and Storage

Use appropriate aseptic technique. Parenteral drug products should be inspected visually for particulate matter and discoloration prior to administration. TRUXIMA should be a clear to opalescent, colorless to pale yellow solution. Do not use vial if particulates or discoloration is present.

Administration

Use a sterile needle and syringe to prepare TRUXIMA. Withdraw the necessary amount of TRUXIMA and dilute to a final concentration of 1 mg/mL to 4 mg/mL in an infusion bag containing either 0.9% Sodium Chloride, USP, or 5% Dextrose Injection, USP. Gently invert the bag to mix the solution. Do not mix or dilute with other drugs. Discard any unused portion left in the vial.

Storage

Diluted TRUXIMA solutions for infusion may be stored refrigerated at 2°C to 8°C (36°F to 46°F) for 24 hours. Diluted TRUXIMA solutions for infusion have been shown to be stable for an additional 24 hours at room temperature. However, since TRUXIMA solutions do not contain a preservative, diluted solutions should be stored refrigerated (2°C to 8°C). No incompatibilities between TRUXIMA and polyvinylchloride or polyethylene bags have been observed.

3 DOSAGE FORMS AND STRENGTHS

Injection: TRUXIMA is a clear to opalescent, colorless to pale yellow solution for intravenous infusion:

- 100 mg/10 mL (10 mg/mL) in a single-dose vial
- 500 mg/50 mL (10 mg/mL) in a single-dose vial

4 CONTRAINDICATIONS

None.

5 WARNINGS AND PRECAUTIONS

5.1 Infusion-Related Reactions

Rituximab products can cause severe, including fatal, infusion-related reactions. Severe reactions typically occurred during the first infusion with time to onset of 30 to 120 minutes. Rituximab product-induced infusion-related reactions and sequelae include urticaria, hypotension, angioedema, hypoxia, bronchospasm, pulmonary infiltrates, acute respiratory distress syndrome, myocardial infarction, ventricular fibrillation, cardiogenic shock, anaphylactoid events, or death.

Premedicate patients with an antihistamine and acetaminophen prior to dosing. For RA, GPA and MPA, and PV patients, methylprednisolone 100 mg intravenously or its equivalent is recommended 30 minutes prior to each infusion. Institute medical management (e.g., glucocorticoids, epinephrine, bronchodilators, or oxygen) for infusion-related reactions as needed. Depending on the severity of the infusion-related reaction and the required interventions, temporarily or permanently discontinue TRUXIMA. Resume infusion at a minimum 50% reduction in rate after symptoms have resolved. Closely monitor the following patients: those with pre-existing cardiac or pulmonary conditions, those who experienced prior cardiopulmonary adverse reactions, and those with high numbers of circulating malignant cells (greater than or equal to 25,000/mm³) [*see Warnings and Precautions (5.7), Adverse Reactions (6.1)*].

5.2 Severe Mucocutaneous Reactions

Mucocutaneous reactions, some with fatal outcome, can occur in patients treated with rituximab products. These reactions include paraneoplastic pemphigus, Stevens-Johnson syndrome, lichenoid dermatitis, vesiculobullous dermatitis, and toxic epidermal necrolysis. The onset of these reactions has been variable and includes reports with onset on the first day of rituximab exposure. Discontinue TRUXIMA in patients who experience a severe mucocutaneous reaction. The safety of readministration of rituximab products to patients with severe mucocutaneous reactions has not been determined.

5.3 Hepatitis B Virus (HBV) Reactivation

Hepatitis B virus (HBV) reactivation, in some cases resulting in fulminant hepatitis, hepatic failure and death, can occur in patients treated with drugs classified as CD20-directed cytolytic antibodies, including rituximab products. Cases have been reported in patients who are hepatitis B surface antigen (HBsAg) positive and also in patients who are HBsAg negative but are hepatitis B core antibody (anti-HBc) positive. Reactivation also has occurred in patients who appear to have resolved hepatitis B infection (i.e., HBsAg negative, anti-HBc positive and hepatitis B surface antibody [anti-HBs] positive).

HBV reactivation is defined as an abrupt increase in HBV replication manifesting as a rapid increase in serum HBV DNA levels or detection of HBsAg in a person who was previously HBsAg negative and anti-HBc positive. Reactivation of HBV replication is often followed by hepatitis, i.e., increase in transaminase levels. In severe cases increase in bilirubin levels, liver failure, and death can occur.

Screen all patients for HBV infection by measuring HBsAg and anti-HBc before initiating treatment with TRUXIMA. For patients who show evidence of prior hepatitis B infection (HBsAg positive [regardless of antibody status] or HBsAg negative but anti-HBc positive), consult with physicians with expertise in managing hepatitis B regarding monitoring and consideration for HBV antiviral therapy before and/or during TRUXIMA treatment.

Monitor patients with evidence of current or prior HBV infection for clinical and laboratory signs of hepatitis or HBV reactivation during and for several months following TRUXIMA therapy. HBV reactivation has been reported up to 24 months following completion of rituximab therapy.

In patients who develop reactivation of HBV while on TRUXIMA, immediately discontinue TRUXIMA and any concomitant chemotherapy, and institute appropriate treatment. Insufficient data exist regarding the safety of resuming TRUXIMA treatment in patients who develop HBV reactivation. Resumption of TRUXIMA treatment in patients whose HBV reactivation resolves should be discussed with physicians with expertise in managing HBV.

5.4 Progressive Multifocal Leukoencephalopathy (PML)

JC virus infection resulting in PML and death can occur in rituximab product-treated patients with hematologic malignancies or with autoimmune diseases. The majority of patients with hematologic malignancies diagnosed with PML received rituximab in combination with chemotherapy or as part of a hematopoietic stem cell transplant. The patients with autoimmune diseases had prior or concurrent immunosuppressive therapy. Most cases of PML were diagnosed within 12 months of their last infusion of rituximab.

Consider the diagnosis of PML in any patient presenting with new-onset neurologic manifestations. Evaluation of PML includes, but is not limited to, consultation with a neurologist, brain MRI, and lumbar puncture.

Discontinue TRUXIMA and consider discontinuation or reduction of any concomitant chemotherapy or immunosuppressive therapy in patients who develop PML.

5.5 Tumor Lysis Syndrome (TLS)

Acute renal failure, hyperkalemia, hypocalcemia, hyperuricemia, or hyperphosphatemia from tumor lysis, sometimes fatal, can occur within 12 to 24 hours after the first infusion of rituximab products in patients with NHL. A high number of circulating malignant cells (greater than or equal to 25,000/mm³) or high tumor burden, confers a greater risk of TLS.

Administer aggressive intravenous hydration and anti-hyperuricemic therapy in patients at high risk for TLS. Correct electrolyte abnormalities, monitor renal function and fluid balance, and administer supportive care, including dialysis as indicated [*see Warnings and Precautions (5.8)*].

5.6 Infections

Serious, including fatal, bacterial, fungal, and new or reactivated viral infections can occur during and following the completion of rituximab product-based therapy. Infections have been reported in some patients with prolonged hypogammaglobulinemia (defined as hypogammaglobulinemia greater than 11 months after rituximab exposure). New or reactivated viral infections included cytomegalovirus, herpes simplex virus, parvovirus B19, varicella zoster virus, West Nile virus, and hepatitis B and C. Discontinue TRUXIMA for serious infections and institute appropriate anti-infective therapy [*see Adverse Reactions (6.1, 6.3)*]. TRUXIMA is not recommended for use in patients with severe, active infections.

5.7 Cardiovascular Adverse Reactions

Cardiac adverse reactions, including ventricular fibrillation, myocardial infarction, and cardiogenic shock may occur in patients receiving rituximab products. Discontinue infusions for serious or life-threatening cardiac arrhythmias. Perform cardiac monitoring during and after all infusions of TRUXIMA for patients who develop clinically significant arrhythmias, or who have a history of arrhythmia or angina [*see Adverse Reactions (6.1)*].

5.8 Renal Toxicity

Severe, including fatal, renal toxicity can occur after rituximab product administration in patients with NHL. Renal toxicity has occurred in patients who experience tumor lysis syndrome and in patients with NHL administered concomitant cisplatin therapy during clinical trials. The combination of cisplatin and TRUXIMA is not an approved treatment regimen. Monitor closely for signs of renal failure and discontinue TRUXIMA in patients with a rising serum creatinine or oliguria [*see Warnings and Precautions (5.5)*].

5.9 Bowel Obstruction and Perforation

Abdominal pain, bowel obstruction and perforation, in some cases leading to death, can occur in patients receiving rituximab products in combination with chemotherapy. In postmarketing reports, the mean time to documented gastrointestinal perforation was 6 (range 1 to 77) days in patients with NHL. Evaluate if symptoms of obstruction such as abdominal pain or repeated vomiting occur.

5.10 Immunization

The safety of immunization with live viral vaccines following rituximab product therapy has not been studied and vaccination with live virus vaccines is not recommended before or during treatment.

For patients treated with TRUXIMA, physicians should review the patient's vaccination status and patients should, if possible, be brought up-to-date with all immunizations in agreement with current immunization guidelines prior to initiating TRUXIMA and administer non live vaccines at least 4 weeks prior to a course of TRUXIMA.

The effect of rituximab on immune responses was assessed in a randomized, controlled study in patients with RA treated with rituximab and methotrexate (MTX) compared to patients treated with MTX alone.

A response to pneumococcal vaccination (a T-cell independent antigen) as measured by an increase in antibody titers to at least 6 of 12 serotypes was lower in patients treated with rituximab plus MTX as compared to patients treated with MTX alone (19% vs. 61%). A lower proportion of patients in the rituximab plus MTX group developed detectable levels of anti-keyhole limpet hemocyanin antibodies (a novel protein antigen) after vaccination compared to patients on MTX alone (47% vs. 93%).

A positive response to tetanus toxoid vaccine (a T-cell dependent antigen with existing immunity) was similar in patients treated with rituximab plus MTX compared to patients on MTX alone (39% vs. 42%). The proportion of patients maintaining a positive Candida skin test (to evaluate delayed type hypersensitivity) was also similar (77% of patients on rituximab plus MTX vs. 70% of patients on MTX alone).

Most patients in the rituximab-treated group had B-cell counts below the lower limit of normal at the time of immunization. The clinical implications of these findings are not known.

5.11 Embryo-Fetal Toxicity

Based on human data, rituximab products can cause fetal harm due to B-cell lymphocytopenia in infants exposed in-utero. Advise pregnant women of the potential risk to a fetus. Advise females of reproductive potential to use effective contraception while receiving TRUXIMA and for 12 months after the last dose [*see Use in Specific Populations (8.1, 8.3)*].

5.12 Concomitant Use with Other Biologic Agents and DMARDs other than Methotrexate in RA, GPA and MPA, PV

Limited data are available on the safety of the use of biologic agents or disease modifying antirheumatic drugs (DMARDs) other than methotrexate in RA patients exhibiting peripheral B-cell depletion following treatment with rituximab. Observe patients closely for signs of infection if biologic agents and/or DMARDs are used concomitantly. Use of concomitant immunosuppressants other than corticosteroids has not been studied in GPA or MPA, or PV patients exhibiting peripheral B-cell depletion following treatment with rituximab products.

5.13 Use in RA Patients Who Have Not Had Prior Inadequate Response to Tumor Necrosis Factor (TNF) Antagonists

While the efficacy of rituximab was supported in four controlled trials in patients with RA with prior inadequate responses to non-biologic DMARDs, and in a controlled trial in MTX-naïve patients, a favorable risk-benefit relationship has not been established in these populations. The use of TRUXIMA in patients with RA who have not had prior inadequate response to one or more TNF antagonists is not recommended [*see Clinical Studies (14.6)*].

6 ADVERSE REACTIONS

The following clinically significant adverse reactions are discussed in greater detail in other sections of the labeling:

- Infusion-related reactions [*see Warnings and Precautions (5.1)*]
- Severe mucocutaneous reactions [*see Warnings and Precautions (5.2)*]
- Hepatitis B reactivation with fulminant hepatitis [*see Warnings and Precautions (5.3)*]
- Progressive multifocal leukoencephalopathy [*see Warnings and Precautions (5.4)*]
- Tumor lysis syndrome [*see Warnings and Precautions (5.5)*]

- Infections [see Warnings and Precautions (5.6)]
- Cardiovascular adverse reactions [see Warnings and Precautions (5.7)]
- Renal toxicity [see Warnings and Precautions (5.8)]
- Bowel obstruction and perforation [see Warnings and Precautions (5.9)]

6.1 Clinical Trials Experience

Because clinical trials are conducted under widely varying conditions, adverse reaction rates observed in the clinical trials of a drug cannot be directly compared to rates in the clinical trials of another drug and may not reflect the rates observed in clinical practice.

B-Cell Malignancies

The data described below reflect exposure to rituximab in 3,092 patients, with exposures ranging from a single infusion up to 2 years. Rituximab was studied in both single-arm and controlled trials (n=356 and n=2,427). The population included 1180 patients with low grade or follicular lymphoma, 927 patients with DLBCL, 676 patients with CLL, and 309 patients with another indication. Most NHL patients received rituximab as an infusion of 375 mg/m² per infusion, given as a single agent weekly for up to 8 doses, in combination with chemotherapy for up to 8 doses, or following chemotherapy for up to 16 doses. CLL patients received rituximab 375 mg/m² as an initial infusion followed by 500 mg/m² for up to 5 doses, in combination with fludarabine and cyclophosphamide. Seventy-one percent of CLL patients received 6 cycles and 90% received at least 3 cycles of rituximab-based therapy.

The most common adverse reactions of rituximab (incidence greater than or equal to 25%) observed in clinical trials of patients with NHL were infusion-related reactions, fever, lymphopenia, chills, infection, and asthenia.

The most common adverse reactions of rituximab (incidence greater than or equal to 25%) observed in clinical trials of patients with CLL were: infusion-related reactions and neutropenia.

Infusion-Related Reactions

In the majority of patients with NHL, infusion-related reactions consisting of fever, chills/rigors, nausea, pruritus, angioedema, hypotension, headache, bronchospasm, urticaria, rash, vomiting, myalgia, dizziness, or hypertension occurred during the first rituximab infusion. Infusion-related reactions typically occurred within 30 to 120 minutes of beginning the first infusion and resolved with slowing or interruption of the rituximab infusion and with supportive care (diphenhydramine, acetaminophen, and intravenous saline). The incidence of infusion-related reactions was highest during the first infusion (77%) and decreased with each subsequent infusion [see Warnings and Precautions (5.1)]. In adult patients with previously untreated follicular NHL or previously untreated DLBCL, who did not experience a Grade 3 or 4 infusion-related reaction in Cycle 1 and received a 90-minute infusion of rituximab at Cycle 2, the incidence of Grade 3-4 infusion-related reactions on the day of, or day after the infusion was 1.1% (95% CI [0.3%, 2.8%]). For Cycles 2 to 8, the incidence of Grade 3-4 infusion-related reactions on the day of or day after the 90-minute infusion, was 2.8% (95% CI [1.3%, 5.0%]) [see Warnings and Precautions (5.1), Clinical Studies (14.4)].

Infections

Serious infections (NCI CTCAE Grade 3 or 4), including sepsis, occurred in less than 5% of patients with NHL in the single-arm studies. The overall incidence of infections was 31% (bacterial 19%, viral 10%, unknown 6%, and fungal 1%) [see Warnings and Precautions (5.6)].

In randomized, controlled studies where rituximab was administered following chemotherapy for the treatment of follicular or low-grade NHL, the rate of infection was higher among patients who received rituximab. In diffuse large B-cell lymphoma patients, viral infections occurred more frequently in those who received rituximab.

Cytopenias and hypogammaglobulinemia

In patients with NHL receiving rituximab monotherapy, NCI-CTC Grade 3 and 4 cytopenias were reported in 48% of patients. These included lymphopenia (40%), neutropenia (6%), leukopenia (4%), anemia (3%), and thrombocytopenia (2%). The median duration of lymphopenia was 14 days (range, 1 to 588 days) and of neutropenia was 13 days (range, 2 to 116 days). A single occurrence of transient aplastic anemia (pure red cell aplasia) and two occurrences of hemolytic anemia following rituximab therapy occurred during the single-arm studies.

In studies of monotherapy, rituximab-induced B-cell depletion occurred in 70% to 80% of patients with NHL. Decreased IgM and IgG serum levels occurred in 14% of these patients.

In CLL trials, the frequency of prolonged neutropenia and late-onset neutropenia was higher in patients treated with R-FC compared to patients treated with FC. Prolonged neutropenia is defined as Grade 3-4 neutropenia that has not resolved between 24 and 42 days after the last dose of study treatment. Late-onset neutropenia is defined as Grade 3-4 neutropenia starting at least 42 days after the last treatment dose.

In patients with previously untreated CLL, the frequency of prolonged neutropenia was 8.5% for patients who received R-FC (n=402) and 5.8% for patients who received FC (n=398). In patients who did not have prolonged neutropenia, the frequency of late-onset neutropenia was 14.8% of 209 patients who received R-FC and 4.3% of 230 patients who received FC.

For patients with previously treated CLL, the frequency of prolonged neutropenia was 24.8% for patients who received R-FC (n=274) and 19.1% for patients who received FC (n=274). In patients who did not have prolonged neutropenia, the frequency of late-onset neutropenia was 38.7% in 160 patients who received R-FC and 13.6% of 147 patients who received FC.

Relapsed or Refractory, Low-Grade NHL

Adverse reactions presented in Table 1 occurred in 356 patients with relapsed or refractory, low-grade or follicular, CD20-positive, B-cell NHL treated in single-arm studies of rituximab administered as a single agent [see *Clinical Studies (14.1)*]. Most patients received rituximab 375 mg/m² weekly for 4 doses.

Table 1
Incidence of Adverse Reactions in greater than or equal to 5% of Patients with Relapsed or Refractory, Low-Grade or Follicular NHL, Receiving Single-agent Rituximab (N=356)^{*, †}

	All Grades (%)	Grade 3 and 4 (%)
Any Adverse Reactions	99	57
<u>Body as a Whole</u>	86	10
Fever	53	1
Chills	33	3
Infection	31	4
Asthenia	26	1
Headache	19	1
Abdominal Pain	14	1
Pain	12	1
Back Pain	10	1
Throat Irritation	9	0
Flushing	5	0

<u>Heme and Lymphatic System</u>	67	48
Lymphopenia	48	40
Leukopenia	14	4
Neutropenia	14	6
Thrombocytopenia	12	2
Anemia	8	3
<u>Skin and Appendages</u>	44	2
Night Sweats	15	1
Rash	15	1
Pruritus	14	1
Urticaria	8	1
<u>Respiratory System</u>	38	4
Increased Cough	13	1
Rhinitis	12	1
Bronchospasm	8	1
Dyspnea	7	1
Sinusitis	6	0
<u>Metabolic and Nutritional Disorders</u>	38	3
Angioedema	11	1
Hyperglycemia	9	1
Peripheral Edema	8	0
LDH Increase	7	0
<u>Digestive System</u>	37	2
Nausea	23	1
Diarrhea	10	1
Vomiting	10	1
<u>Nervous System</u>	32	1
Dizziness	10	1
Anxiety	5	1
<u>Musculoskeletal System</u>	26	3
Myalgia	10	1
Arthralgia	10	1
<u>Cardiovascular System</u>	25	3
Hypotension	10	1
Hypertension	6	1

* Adverse reactions observed up to 12 months following rituximab.

† Adverse reactions graded for severity by NCI-CTC criteria.

In these single-arm rituximab studies, bronchiolitis obliterans occurred during and up to 6 months after rituximab infusion.

Previously Untreated, Low-Grade or Follicular, NHL

In NHL Study 4, patients in the R-CVP arm experienced a higher incidence of infusional toxicity and neutropenia compared to patients in the CVP arm. The following adverse reactions occurred more frequently (greater than or equal to 5%) in patients receiving R-CVP compared to CVP alone: rash (17% vs. 5%), cough (15% vs. 6%), flushing (14% vs. 3%), rigors (10% vs. 2%), pruritus (10% vs. 1%), neutropenia (8% vs. 3%), and chest tightness (7% vs. 1%) [see *Clinical Studies (14.2)*].

In NHL Study 5, detailed safety data collection was limited to serious adverse reactions, Grade greater than or equal to 2 infections, and Grade greater than or equal to 3 adverse reactions. In patients receiving rituximab as single-agent maintenance therapy following rituximab plus chemotherapy, infections were reported more frequently compared to the observation arm (37% vs. 22%). Grade 3-4 adverse reactions occurring at a higher incidence (greater than or equal to 2%) in the rituximab group were infections (4% vs. 1%) and neutropenia (4% vs. less than 1%).

In NHL Study 6, the following adverse reactions were reported more frequently (greater than or equal to 5%) in patients receiving rituximab following CVP compared to patients who received no further therapy: fatigue (39% vs. 14%), anemia (35% vs. 20%), peripheral sensory neuropathy (30% vs. 18%), infections (19% vs. 9%), pulmonary toxicity (18% vs. 10%), hepato-biliary toxicity (17% vs. 7%), rash and/or pruritus (17% vs. 5%), arthralgia (12% vs. 3%), and weight gain (11% vs. 4%). Neutropenia was the only Grade 3 or 4 adverse reaction that occurred more frequently (greater than or equal to 2%) in the rituximab arm compared with those who received no further therapy (4% vs. 1%) [see *Clinical Studies (14.3)*].

DLBCL

In NHL Studies 7 (NCT00003150) and 8, [see *Clinical Studies (14.3)*], the following adverse reactions, regardless of severity, were reported more frequently (greater than or equal to 5%) in patients age greater than or equal to 60 years receiving R-CHOP as compared to CHOP alone: pyrexia (56% vs. 46%), lung disorder (31% vs. 24%), cardiac disorder (29% vs. 21%), and chills (13% vs. 4%). Detailed safety data collection in these studies was primarily limited to Grade 3 and 4 adverse reactions and serious adverse reactions.

In NHL Study 8, a review of cardiac toxicity determined that supraventricular arrhythmias or tachycardia accounted for most of the difference in cardiac disorders (4.5% for R-CHOP vs. 1.0% for CHOP).

The following Grade 3 or 4 adverse reactions occurred more frequently among patients in the R-CHOP arm compared with those in the CHOP arm: thrombocytopenia (9% vs. 7%) and lung disorder (6% vs. 3%). Other Grade 3 or 4 adverse reactions occurring more frequently among patients receiving R-CHOP were viral infection (NHL Study 8), neutropenia (NHL Studies 8 and 9 (NCT00064116)), and anemia (NHL Study 9).

CLL

The data below reflect exposure to rituximab in combination with fludarabine and cyclophosphamide in 676 patients with CLL in CLL Study 1 (NCT00281918) or CLL Study 2 (NCT00090051) [see *Clinical Studies (14.5)*]. The age range was 30 to 83 years and 71% were men. Detailed safety data collection in CLL Study 1 was limited to Grade 3 and 4 adverse reactions and serious adverse reactions.

Infusion-related adverse reactions were defined by any of the following adverse events occurring during or within 24 hours of the start of infusion: nausea, pyrexia, chills, hypotension, vomiting, and dyspnea.

In CLL Study 1, the following Grade 3 and 4 adverse reactions occurred more frequently in R-FC-treated patients compared to FC-treated patients: infusion-related reactions (9% in R-FC arm), neutropenia (30% vs. 19%), febrile neutropenia (9% vs. 6%), leukopenia (23% vs. 12%), and pancytopenia (3% vs. 1%).

In CLL Study 2, the following Grade 3 or 4 adverse reactions occurred more frequently in R-FC-treated patients compared to FC-treated patients: infusion-related reactions (7% in R-FC arm), neutropenia (49% vs. 44%), febrile neutropenia (15% vs. 12%), thrombocytopenia (11% vs. 9%), hypotension (2% vs. 0%), and hepatitis B (2% vs. <1%). Fifty-nine percent of R-FC-treated patients experienced an infusion-related reaction of any severity.

Rheumatoid Arthritis

The data presented below reflect the experience in 2,578 RA patients treated with rituximab in controlled and long-term studies¹ with a total exposure of 5,014 patient-years.

¹ Pooled studies: NCT00074438, NCT00422383, NCT00468546, NCT00299130, NCT00282308, NCT00266227, NCT02693210, NCT02093026 and NCT02097745

Among all exposed patients, adverse reactions reported in greater than 10% of patients include infusion-related reactions, upper respiratory tract infection, nasopharyngitis, urinary tract infection, and bronchitis.

In placebo-controlled studies, patients received 2 x 500 mg or 2 x 1,000 mg intravenous infusions of rituximab or placebo, in combination with methotrexate, during a 24-week period. From these studies, 938 patients treated with rituximab (2 x 1,000 mg) or placebo have been pooled (*see Table 2*). Adverse reactions reported in greater than or equal to 5% of patients were hypertension, nausea, upper respiratory tract infection, arthralgia, pyrexia and pruritus (*see Table 2*). The rates and types of adverse reactions in patients who received rituximab 2 x 500 mg were similar to those observed in patients who received rituximab 2 x 1,000 mg.

Table 2*

Incidence of All Adverse Reactions[†] Occurring in greater than or equal to 2% and at Least 1% Greater than Placebo Among Rheumatoid Arthritis Patients in Clinical Studies Up to Week 24 (Pooled)

Adverse Reactions	Placebo + MTX	Rituximab + MTX
	N=398 n (%)	N=540 n (%)
Hypertension	21 (5)	43 (8)
Nausea	19 (5)	41 (8)
Upper Respiratory Tract Infection	23 (6)	37 (7)
Arthralgia	14 (4)	31 (6)
Pyrexia	8 (2)	27 (5)
Pruritus	5 (1)	26 (5)
Chills	9 (2)	16 (3)
Dyspepsia	3 (<1)	16 (3)
Rhinitis	6 (2)	14 (3)
Paresthesia	3 (<1)	12 (2)
Urticaria	3 (<1)	12 (2)
Abdominal Pain Upper	4 (1)	11 (2)
Throat Irritation	0 (0)	11 (2)
Anxiety	5 (1)	9 (2)
Migraine	2 (<1)	9 (2)
Asthenia	1 (<1)	9 (2)

* These data are based on 938 patients treated in Phase 2 and 3 studies of rituximab (2 x 1,000 mg) or placebo administered in combination with methotrexate.

[†] Coded using MedDRA.

Infusion-Related Reactions

In the rituximab RA pooled placebo-controlled studies, 32% of rituximab-treated patients experienced an adverse reaction during or within 24 hours following their first infusion, compared to 23% of placebo-treated patients receiving their first infusion. The incidence of adverse reactions during the 24-hour period following the second infusion, rituximab or placebo, decreased to 11% and 13%, respectively. Acute infusion-related reactions (manifested by fever, chills, rigors, pruritus, urticaria/rash, angioedema, sneezing, throat irritation, cough, and/or bronchospasm, with or without associated hypotension or hypertension) were experienced by 27% of rituximab-treated patients following their first infusion, compared to 19% of placebo-treated patients receiving their first placebo infusion. The incidence of these acute infusion-related reactions following the second infusion of rituximab or placebo decreased to 9% and 11%, respectively. Serious acute infusion-related reactions were experienced by less than 1% of patients in either treatment group. Acute infusion-related reactions required dose modification (stopping, slowing, or interruption of the infusion) in 10% and 2% of patients receiving rituximab or placebo, respectively, after the first course. The proportion of patients experiencing acute infusion-related reactions decreased with subsequent courses of rituximab. The

administration of intravenous glucocorticoids prior to rituximab infusions reduced the incidence and severity of such reactions, however, there was no clear benefit from the administration of oral glucocorticoids for the prevention of acute infusion-related reactions. Patients in clinical studies also received antihistamines and acetaminophen prior to rituximab infusions.

Infections

In the pooled, placebo-controlled studies, 39% of patients in the rituximab group experienced an infection of any type compared to 34% of patients in the placebo group. The most common infections were nasopharyngitis, upper respiratory tract infections, urinary tract infections, bronchitis, and sinusitis.

The incidence of serious infections was 2% in the rituximab-treated patients and 1% in the placebo group.

In the experience with rituximab in 2,578 RA patients, the rate of serious infections was 4.31 per 100 patient-years. The most common serious infections (greater than or equal to 0.5%) were pneumonia or lower respiratory tract infections, cellulitis and urinary tract infections. Fatal serious infections included pneumonia, sepsis and colitis. Rates of serious infection remained stable in patients receiving subsequent courses. In 185 rituximab-treated RA patients with active disease, subsequent treatment with a biologic DMARD, the majority of which were TNF antagonists, did not appear to increase the rate of serious infection. Thirteen serious infections were observed in 186.1 patient years (6.99 per 100 patient-years) prior to exposure and 10 were observed in 182.3 patient years (5.49 per 100 patient-years) after exposure.

Cardiovascular Adverse Reactions

In the pooled, placebo-controlled studies, the proportion of patients with serious cardiovascular reactions was 1.7% and 1.3% in the rituximab and placebo treatment groups, respectively. Three cardiovascular deaths occurred during the double-blind period of the RA studies including all rituximab regimens (3/769 = 0.4%) as compared to none in the placebo treatment group (0/389).

In the experience with rituximab in 2,578 RA patients, the rate of serious cardiac reactions was 1.93 per 100 patient-years. The rate of myocardial infarction (MI) was 0.56 per 100 patient-years (28 events in 26 patients), which is consistent with MI rates in the general RA population. These rates did not increase over three courses of rituximab.

Since patients with RA are at increased risk for cardiovascular events compared with the general population, patients with RA should be monitored throughout the infusion and TRUXIMA should be discontinued in the event of a serious or life-threatening cardiac event.

Hypophosphatemia and hyperuricemia

In the pooled, placebo-controlled studies, newly-occurring hypophosphatemia (less than 2.0 mg/dl) was observed in 12% (67/540) of patients on rituximab versus 10% (39/398) of patients on placebo. Hypophosphatemia was more common in patients who received corticosteroids. Newly-occurring hyperuricemia (greater than 10 mg/dl) was observed in 1.5% (8/540) of patients on rituximab versus 0.3% (1/398) of patients on placebo.

In the experience with rituximab in RA patients, newly-occurring hypophosphatemia was observed in 21% (528/2570) of patients and newly-occurring hyperuricemia was observed in 2% (56/2,570) of patients. The majority of the observed hypophosphatemia occurred at the time of the infusions and was transient.

Retreatment in Patients with RA

In the experience with rituximab in RA patients, 2,578 patients have been exposed to rituximab and have received up to 10 courses of rituximab in RA clinical trials, with 1,890, 1,043, and 425 patients having received at least two, three, and four courses, respectively. Most of the patients who received additional courses did so 24

weeks or more after the previous course and none were retreated sooner than 16 weeks. The rates and types of adverse reactions reported for subsequent courses of rituximab were similar to rates and types seen for a single course of rituximab.

In RA Study 2, where all patients initially received rituximab, the safety profile of patients who were retreated with rituximab was similar to those who were retreated with placebo [see *Clinical Studies (14.6)*, and *Dosage and Administration (2.5)*].

Granulomatosis with Polyangiitis (GPA) (Wegener’s Granulomatosis) and Microscopic Polyangiitis (MPA)

Induction Treatment of Adult Patients with Active GPA/MPA (GPA/MPA Study 1)

The data presented below from GPA/MPA Study 1 (NCT00104299) reflect the experience in 197 adult patients with active GPA and MPA treated with rituximab or cyclophosphamide in a single controlled study, which was conducted in two phases: a 6-month randomized, double-blind, double-dummy, active-controlled remission induction phase and an additional 12-month remission maintenance phase [see *Clinical Studies (14.7)*]. In the 6-month remission induction phase, 197 patients with GPA and MPA were randomized to either rituximab 375 mg/m² once weekly for 4 weeks plus glucocorticoids, or oral cyclophosphamide 2 mg/kg daily (adjusted for renal function, white blood cell count, and other factors) plus glucocorticoids to induce remission. Once remission was achieved or at the end of the 6-month remission induction period, the cyclophosphamide group received azathioprine to maintain remission. The rituximab group did not receive additional therapy to maintain remission. The primary analysis was at the end of the 6-month remission induction period and the safety results for this period are described below.

Adverse reactions presented below in Table 3 were adverse events which occurred at a rate of greater than or equal to 10% in the rituximab group. This table reflects experience in 99 GPA and MPA patients treated with rituximab, with a total of 47.6 patient-years of observation and 98 GPA and MPA patients treated with cyclophosphamide, with a total of 47.0 patient-years of observation. Infection was the most common category of adverse events reported (47 to 62%) and is discussed below.

Table 3

Incidence of All Adverse Reactions

Occurring in greater than or equal to 10% of rituximab-treated Patients with active GPA and MPA in the GPA/MPA Study 1 Up to Month 6*

Adverse Reaction	Rituximab	Cyclophosphamide
	N=99 n (%)	N=98 n (%)
Nausea	18 (18%)	20 (20%)
Diarrhea	17 (17%)	12 (12%)
Headache	17 (17%)	19 (19%)
Muscle spasms	17 (17%)	15 (15%)
Anemia	16 (16%)	20 (20%)
Peripheral edema	16 (16%)	6 (6%)
Insomnia	14 (14%)	12 (12%)
Arthralgia	13 (13%)	9 (9%)
Cough	13 (13%)	11 (11%)
Fatigue	13 (13%)	21 (21%)
Increased ALT	13 (13%)	15 (15%)
Hypertension	12 (12%)	5 (5%)
Epistaxis	11 (11%)	6 (6%)
Dyspnea	10 (10%)	11 (11%)
Leukopenia	10 (10%)	26 (27%)

Rash	10 (10%)	17 (17%)
------	----------	----------

* The study design allowed for crossover or treatment by best medical judgment, and 13 patients in each treatment group received a second therapy during the 6 month study period.

Infusion-Related Reactions

Infusion-related reactions in GPA/MPA Study 1 were defined as any adverse event occurring within 24 hours of an infusion and considered to be infusion-related by investigators. Among the 99 patients treated with rituximab, 12% experienced at least one infusion-related reaction, compared with 11% of the 98 patients in the cyclophosphamide group.

Infusion-related reactions included cytokine release syndrome, flushing, throat irritation, and tremor. In the rituximab group, the proportion of patients experiencing an infusion-related reaction was 12%, 5%, 4%, and 1% following the first, second, third, and fourth infusions, respectively. Patients were pre-medicated with antihistamine and acetaminophen before each rituximab infusion and were on background oral corticosteroids which may have mitigated or masked an infusion-related reaction; however, there is insufficient evidence to determine whether premedication diminishes the frequency or severity of infusion-related reactions.

Infections

In GPA/MPA Study 1, 62% (61/99) of patients in the rituximab group experienced an infection of any type compared to 47% (46/98) patients in the cyclophosphamide group by Month 6. The most common infections in the rituximab group were upper respiratory tract infections, urinary tract infections, and herpes zoster.

The incidence of serious infections was 11% in the rituximab-treated patients and 10% in the cyclophosphamide treated patients, with rates of approximately 25 and 28 per 100 patient-years, respectively. The most common serious infection was pneumonia.

Hypogammaglobulinemia

Hypogammaglobulinemia (IgA, IgG or IgM below the lower limit of normal) has been observed in patients with GPA and MPA treated with rituximab in GPA/MPA Study 1. At 6 months, in the rituximab group, 27%, 58% and 51% of patients with normal immunoglobulin levels at baseline, had low IgA, IgG and IgM levels, respectively compared to 25%, 50% and 46% in the cyclophosphamide group.

Follow up Treatment of Adult Patients with GPA/MPA who have Achieved Disease Control with Induction Treatment (GPA/MPA Study 2)

In GPA/MPA Study 2 (NCT00748644), an open-label, controlled, clinical study [see *Clinical Studies (14.7)*], evaluating the efficacy and safety of non-U.S.-licensed rituximab versus azathioprine as follow up treatment in adult patients with GPA, MPA or renal-limited ANCA-associated vasculitis who had achieved disease control after induction treatment with cyclophosphamide, a total of 57 GPA and MPA patients in disease remission received follow up treatment with two 500 mg intravenous infusions of non-U.S.-licensed rituximab, separated by two weeks on Day 1 and Day 15, followed by a 500 mg intravenous infusion every 6 months for 18 months.

The safety profile was consistent with the safety profile for rituximab in RA and GPA and MPA.

Infusion-Related Reactions

In GPA/MPA Study 2, 7/57 (12%) patients in the non-U.S.-licensed rituximab arm reported infusion-related reactions. The incidence of IRR symptoms was highest during or after the first infusion (9%) and decreased with subsequent infusions (less than 4%). One patient had two serious IRRs, two IRRs led to a dose modification, and no IRRs were severe, fatal, or led to withdrawal from the study.

Infections

In GPA/MPA Study 2, 30/57 (53%) patients in the non-U.S.-licensed rituximab arm and 33/58 (57%) in the azathioprine arm reported infections. The incidence of all grade infections was similar between the arms. The incidence of serious infections was similar in both arms (12%). The most commonly reported serious infection in the group was mild or moderate bronchitis.

Long-term, Observational Study with Rituximab in Patients with GPA/MPA (GPA/MPA Study 3)

In a long-term observational safety study (NCT01613599), 97 patients with GPA or MPA received treatment with rituximab (mean of 8 infusions [range 1 to 28]) for up to 4 years, according to physician standard practice and discretion. Majority of patients received doses ranging from 500 mg to 1,000 mg, approximately every 6 months. The safety profile was consistent with the safety profile for rituximab in RA and GPA and MPA.

Pemphigus Vulgaris (PV)

PV Study 1

PV Study 1 (NCT00784589), a randomized, controlled, multicenter open-label study, evaluated the efficacy and safety of non-U.S.-licensed rituximab in combination with short-term prednisone compared to prednisone monotherapy in 90 patients (74 Pemphigus Vulgaris [PV] patients and 16 Pemphigus Foliaceus [PF] patients) [see *Clinical Studies (14.8)*]. Safety results for the PV patient population during the 24-month treatment period are described below.

The safety profile of the non-U.S.-licensed rituximab in patients with PV was consistent with that observed in patients with rituximab-treated RA and GPA and MPA [see *Adverse Reactions (6.1)*].

Adverse reactions from PV Study 1 are presented below in Table 4 and were adverse events which occurred at a rate greater than or equal to 5% among PV patients treated with non-U.S.-licensed rituximab and with at least 2% absolute difference in incidence between the group treated with non-U.S.-licensed rituximab and the prednisone monotherapy group up to Month 24. No patients in the group treated with non-U.S.-licensed rituximab withdrew due to adverse reactions. The clinical study did not include sufficient number of patients to allow for direct comparison of adverse reaction rates between treatment groups.

Table 4

Incidence of All Adverse Reactions

Occurring in greater than or equal to 5% Among PV Patients Treated with Non-U.S.-licensed rituximab and with at Least 2% Absolute Difference in Incidence Between the Group Treated with Non-U.S.-licensed rituximab with Short-term Prednisone and the Group Treated with Prednisone Monotherapy in PV Study 1 (Up to Month 24)

Adverse Reaction	Non-U.S.-licensed rituximab + short-term prednisone N=38 n (%)	Prednisone N=36 n (%)
Infusion-related reactions*	22 (58%)	N/A
Depression	7 (18%)	4 (11%)
Herpes simplex	5 (13%)	1 (3%)
Alopecia	5 (13%)	0 (0%)
Fatigue	3 (8%)	2 (6%)
Abdominal pain upper	2 (5%)	1 (3%)
Conjunctivitis	2 (5%)	0 (0%)
Dizziness	2 (5%)	0 (0%)
Headache	2 (5%)	1 (3%)

Herpes zoster	2 (5%)	1 (3%)
Irritability	2 (5%)	0 (0%)
Musculoskeletal pain	2 (5%)	0 (0%)
Pruritus	2 (5%)	0 (0%)
Pyrexia	2 (5%)	0 (0%)
Skin disorder	2 (5%)	0 (0%)
Skin papilloma	2 (5%)	0 (0%)
Tachycardia	2 (5%)	0 (0%)
Urticaria	2 (5%)	0 (0%)

N/A = not applicable

* Infusion-related reactions included symptoms collected on the next scheduled visit after each infusion, and adverse reactions occurring on the day of or one day after the infusion. The most common infusion-related reactions included headaches, chills, high blood pressure, nausea, asthenia, and pain.

Infusion-Related Reactions

Infusion-related reactions were the most commonly reported adverse drug reactions (58%, 22 patients). All infusion-related reactions were mild to moderate (Grade 1 or 2) except one Grade 3 serious infusion-related reaction (arthralgia) associated with the Month 12 maintenance infusion. The proportion of patients experiencing an infusion-related reaction was 29% (11 patients), 40% (15 patients), 13% (5 patients), and 10% (4 patients) following the first, second, third, and fourth infusions, respectively. No patients were withdrawn from treatment due to infusion-related reactions. Symptoms of infusion-related reactions were similar in type and severity to those seen in RA and GPA and MPA patients [see *Adverse Reactions (6.1)*].

Infections

Fourteen patients (37%) in the group treated with non-U.S.-licensed rituximab experienced treatment-related infections compared to 15 patients (42%) in the prednisone group. The most common infections in the group treated with non-U.S.-licensed rituximab were herpes simplex, herpes zoster, bronchitis, urinary tract infection, fungal infection, and conjunctivitis. Three patients (8%) in the group treated with non-U.S.-licensed rituximab experienced a total of 5 serious infections (*Pneumocystis jirovecii* pneumonia, infective thrombosis, intervertebral discitis, lung infection, *Staphylococcal* sepsis) and 1 patient (3%) in the prednisone group experienced 1 serious infection (*Pneumocystis jirovecii* pneumonia).

PV Study 2

In PV Study 2 (NCT02383589), a randomized, double-blind, double-dummy, active-comparator, multicenter study evaluating the efficacy and safety of rituximab compared to mycophenolate mofetil (MMF) in patients with moderate-to-severe PV requiring oral corticosteroids, 67 PV patients received treatment with rituximab (initial 1,000 mg IV on Study Day 1 and a second 1,000 mg IV on Study Day 15 repeated at Weeks 24 and 26) for up to 52 weeks [see *Clinical Studies (14.8)*].

In PV Study 2, ADR defined as adverse events occurring in greater than or equal to 5% of patients in the rituximab arms and assessed as related are shown in Table 5.

Table 5

Incidence of All Adverse Reactions

Occurring in greater than or equal to 5% of rituximab-treated Pemphigus Vulgaris Patients
(N=67) from PV Study 2 (up to Week 52)

Adverse Reactions	Rituximab (N=67)
Infusion-related reactions*	15 (22%)*
Upper respiratory tract infection/Nasopharyngitis	11 (16%)

Headache	10 (15%)
Asthenia/Fatigue	9 (13%)
Oral candidiasis	6 (9%)
Arthralgia	6 (9%)
Back pain	6 (9%)
Urinary tract infection	5 (8%)
Dizziness	4 (6%)

*The most common infusion-related reaction symptoms/Preferred Terms for PV Study 2 in the rituximab arm were dyspnoea, erythema, hyperhidrosis, flushing/hot flush, hypotension/low blood pressure and rash/rash pruritic

Infusion-Related Reactions

In PV Study 2, IRRs occurred primarily at the first infusion and the frequency of IRRs decreased with subsequent infusions: 17.9%, 4.7%, 3.5% and 3.5% of patients experienced IRRs at the first, second, third, and fourth infusions, respectively. In 11/15 patients who experienced at least one IRR, the IRRs were Grade 1 or 2. In 4/15 patients, Grade greater than or equal to 3 IRRs were reported and led to discontinuation of rituximab treatment; three of the four patients experienced serious [life-threatening] IRRs. Serious IRRs occurred at the first (2 patients) or second (1 patient) infusion and resolved with symptomatic treatment.

Infections

In PV Study 2, 42/67 patients (62.7%) in the rituximab arm experienced infections. The most common infections in the rituximab arm were upper respiratory tract infection, nasopharyngitis, oral candidiasis and urinary tract infection. Six patients (9%) in the rituximab arm experienced serious infections.

Laboratory Abnormalities

In PV Study 2, in the rituximab arm, transient decreases in T-cell lymphocytes and phosphorus level were very commonly observed post-infusion. In some cases, treatment of hypophosphatemia was required.

Hypogammaglobulinemia (IgG or IgM below the lower limit of normal), including prolonged hypogammaglobulinemia (defined as Ig levels below lower limit of normal for at least 4 months) was observed in PV Study 2. Based on levels less than LLN measured at Week 16, Week 24, Week 40, and Week 52, 16.4% (11/67) of patients with normal baseline immunoglobulins had prolonged hypogammaglobulinemia (10 patients – IgM, 1 patient – both IgG and IgM) after treatment with rituximab.

6.2 Immunogenicity

The observed incidence of anti-drug antibodies is highly dependent on the sensitivity and specificity of the assay. Differences in assay methods preclude meaningful comparisons of the incidence of anti-drug antibodies in the studies described below with the incidence of anti-drug antibodies in other studies, including those of rituximab or of other rituximab products.

Using an ELISA assay, anti-rituximab antibody was detected in 4 of 356 (1.1%) patients with low-grade or follicular NHL receiving single-agent rituximab. Three of the four patients had an objective clinical response.

A total of 273/2,578 (11%) patients with RA tested positive for anti-rituximab antibodies at any time after receiving rituximab. Anti-rituximab antibody positivity was not associated with increased rates of infusion-related reactions or other adverse events. Upon further treatment, the proportions of patients with infusion-related reactions were similar between anti-rituximab antibody positive and negative patients, and most reactions were mild to moderate. Four anti-rituximab antibody positive patients had serious infusion-related reactions, and the temporal relationship between anti-rituximab antibody positivity and infusion-related reaction was variable.

A total of 23/99 (23%) rituximab-treated adult patients with GPA and MPA developed anti-rituximab antibodies by 18 months in GPA/MPA Study 1. The clinical relevance of anti-rituximab antibody formation in rituximab-treated adult patients is unclear.

Using a new ELISA assay, a total of 19/34 (56%) patients with PV, who were treated with non- U.S.-licensed rituximab, tested positive for anti-rituximab antibodies by 18 months in PV Study 1. In PV Study 2, a total of 20/63 (32%) rituximab-treated PV patients tested positive for ADA by week 52 (19 patients had treatment-induced ADA and 1 patient had treatment-enhanced ADA). The clinical relevance of anti-rituximab antibody formation in rituximab-treated PV patients is unclear.

6.3 Postmarketing Experience

The following adverse reactions have been identified during post-approval use of rituximab. Because these reactions are reported voluntarily from a population of uncertain size, it is not always possible to reliably estimate their frequency or establish a causal relationship to drug exposure.

- Hematologic: prolonged pancytopenia, marrow hypoplasia, Grade 3-4 prolonged or late-onset neutropenia, hyperviscosity syndrome in Waldenström's macroglobulinemia, prolonged hypogammaglobulinemia [*see Warnings and Precautions (5.6)*].
- Cardiac: fatal cardiac failure.
- Immune/Autoimmune Events: uveitis, optic neuritis, systemic vasculitis, pleuritis, lupus-like syndrome, serum sickness, polyarticular arthritis, and vasculitis with rash.
- Infection: viral infections, including progressive multifocal leukoencephalopathy (PML), increase in fatal infections in HIV-associated lymphoma, and a reported increased incidence of Grade 3 and 4 infections [*see Warnings and Precautions (5.6)*].
- Neoplasia: disease progression of Kaposi's sarcoma.
- Skin: severe mucocutaneous reactions, pyoderma gangrenosum (including genital presentation).
- Gastrointestinal: bowel obstruction and perforation.
- Pulmonary: fatal bronchiolitis obliterans and fatal interstitial lung disease.
- Nervous system: Posterior Reversible Encephalopathy Syndrome (PRES) / Reversible Posterior Leukoencephalopathy Syndrome (RPLS).

7 DRUG INTERACTIONS

Formal drug interaction studies have not been performed with rituximab products. In patients with CLL, rituximab did not alter systemic exposure to fludarabine or cyclophosphamide. In clinical trials of patients with RA, concomitant administration of methotrexate or cyclophosphamide did not alter the pharmacokinetics of rituximab.

8 USE IN SPECIFIC POPULATIONS

8.1 Pregnancy

Risk Summary

Based on human data, rituximab products can cause adverse developmental outcomes including B-cell lymphocytopenia in infants exposed in-utero [*see Clinical Considerations*]. In animal reproduction studies, intravenous administration of rituximab to pregnant cynomolgus monkeys during the period of organogenesis caused lymphoid B-cell depletion in the newborn offspring at doses resulting in 80% of the exposure (based on AUC) of those achieved following a dose of 2 grams in humans. Advise pregnant women of the risk to a fetus.

Adverse outcomes in pregnancy occur regardless of the health of the mother or the use of medications. The background risk of major birth defects and miscarriage for the indicated populations is unknown. The estimated background risk in the U.S. general population of major birth defects is 2% to 4% and of miscarriage is 15% to 20% of clinically recognized pregnancies.

Clinical Considerations

Fetal/Neonatal Adverse Reactions

Observe newborns and infants for signs of infection and manage accordingly.

Data

Human data

Postmarketing data indicate that B-cell lymphocytopenia generally lasting less than six months can occur in infants exposed to rituximab in-utero. Rituximab was detected postnatally in the serum of infants exposed in-utero.

Animal Data

An embryo-fetal developmental toxicity study was performed on pregnant cynomolgus monkeys. Pregnant animals received rituximab via the intravenous route during early gestation (organogenesis period; post coitum days 20 through 50). Rituximab was administered as loading doses on post coitum (PC) Days 20, 21 and 22, at 15, 37.5 or 75 mg/kg/day, and then weekly on PC Days 29, 36, 43 and 50, at 20, 50 or 100 mg/kg/week. The 100 mg/kg/week dose resulted in 80% of the exposure (based on AUC) of those achieved following a dose of 2 grams in humans. Rituximab crosses the monkey placenta. Exposed offspring did not exhibit any teratogenic effects but did have decreased lymphoid tissue B cells.

A subsequent pre-and postnatal reproductive toxicity study in cynomolgus monkeys was completed to assess developmental effects including the recovery of B cells and immune function in infants exposed to rituximab in utero. Animals were treated with a loading dose of 0, 15, or 75 mg/kg every day for 3 days, followed by weekly dosing with 0, 20, or 100 mg/kg dose. Subsets of pregnant females were treated from PC Day 20 through postpartum Day 78, PC Day 76 through PC Day 134, and from PC Day 132 through delivery and postpartum Day 28. Regardless of the timing of treatment, decreased B cells and immunosuppression were noted in the offspring of rituximab-treated pregnant animals. The B-cell counts returned to normal levels, and immunologic function was restored within 6 months postpartum.

8.2 Lactation

There are limited data on the presence of rituximab in human milk and the effect on the breastfed child, and there are no data on the effect on milk production. Rituximab is detected in the milk of lactating cynomolgus monkeys, and maternal IgG is present in human breast milk. Rituximab has also been reported to be excreted at low concentrations in human breast milk. Given that the clinical significance of this finding for children is not known, advise women not to breastfeed during treatment with TRUXIMA and for 6 months after the last dose due to the potential of serious adverse reactions in breastfed children.

8.3 Females and Males of Reproductive Potential

Rituximab products can cause fetal harm when administered to a pregnant woman [*see Use in Specific Populations (8.1)*].

Pregnancy Testing

Verify pregnancy status in females of reproductive potential prior to initiating TRUXIMA.

Contraception

Females

Advise females of reproductive potential to use effective contraception during treatment with TRUXIMA and for 12 months after the last dose.

8.4 Pediatric Use

The safety and effectiveness of TRUXIMA have not been established in pediatric patients with CLL.

Rheumatoid Arthritis and Pemphigus Vulgaris

The safety and effectiveness of TRUXIMA have not been established in pediatric patients with PV or RA.

Rituximab was not studied in pediatric patients with polyarticular juvenile idiopathic arthritis (PJIA) due to concerns regarding the potential for prolonged immunosuppression as a result of B-cell depletion in the developing juvenile immune system.

8.5 Geriatric Use

Diffuse Large B-Cell NHL

Among patients with DLBCL evaluated in three randomized, active-controlled trials, 927 patients received rituximab in combination with chemotherapy. Of these, 396 (43%) were age 65 or greater and 123 (13%) were age 75 or greater. No overall differences in effectiveness were observed between these patients and younger patients. Cardiac adverse reactions, mostly supraventricular arrhythmias, occurred more frequently among elderly patients. Serious pulmonary adverse reactions were also more common among the elderly, including pneumonia and pneumonitis.

Low-Grade or Follicular Non-Hodgkin's Lymphoma

Patients with previously untreated follicular NHL evaluated in NHL Study 5 were randomized to rituximab as single-agent maintenance therapy (n=505) or observation (n=513) after achieving a response to rituximab in combination with chemotherapy. Of these, 123 (24%) patients in the rituximab arm were age 65 or older. No overall differences in safety or effectiveness were observed between these patients and younger patients. Other clinical studies of rituximab in low-grade or follicular, CD20-positive, B-cell NHL did not include sufficient numbers of patients aged 65 and over to determine whether they respond differently from younger subjects.

Chronic Lymphocytic Leukemia

Among patients with CLL evaluated in two randomized active-controlled trials, 243 of 676 rituximab-treated patients (36%) were 65 years of age or older; of these, 100 rituximab-treated patients (15%) were 70 years of age or older.

In exploratory analyses defined by age, there was no observed benefit from the addition of rituximab to fludarabine and cyclophosphamide among patients 70 years of age or older in CLL Study 1 or in CLL Study 2; there was also no observed benefit from the addition of rituximab to fludarabine and cyclophosphamide among patients 65 years of age or older in CLL Study 2 [see *Clinical Studies (14.5)*]. Patients 70 years or older received lower dose intensity of fludarabine and cyclophosphamide compared to younger patients, regardless of the addition of rituximab. In CLL Study 1, the dose intensity of rituximab was similar in older and younger patients, however in CLL Study 2 older patients received a lower dose intensity of rituximab.

The incidence of Grade 3 and 4 adverse reactions was higher among patients receiving R-FC who were 70 years or older compared to younger patients for neutropenia [44% vs. 31% (CLL Study 1); 56% vs. 39% (CLL Study 2)], febrile neutropenia [16% vs. 6% (NHL Study 10 (NCT00719472))], anemia [5% vs. 2% (CLL Study 1); 21% vs. 10% (CLL Study 2)], thrombocytopenia [19% vs. 8% (CLL Study 2)], pancytopenia [7% vs. 2% (CLL Study 1); 7% vs. 2% (CLL Study 2)] and infections [30% vs. 14% (CLL Study 2)].

Rheumatoid Arthritis

Among the 2,578 patients in global RA studies completed to date, 12% were 65 to 75 years old and 2% were 75 years old and older. The incidences of adverse reactions were similar between older and younger patients. The rates of serious adverse reactions, including serious infections, malignancies, and cardiovascular events were higher in older patients.

Granulomatosis with Polyangiitis (GPA) (Wegener's Granulomatosis) and Microscopic Polyangiitis

Of the 99 rituximab-treated GPA and MPA patients in GPA/MPA Study 1, 36 (36%) were 65 years old and over, while 8 (8%) were 75 years and over. No overall differences in efficacy were observed between patients that were 65 years old and over and younger patients. The overall incidence and rate of all serious adverse events was higher in patients 65 years old and over. The clinical study did not include sufficient numbers of patients aged 65 and over to determine whether they respond differently from younger subjects.

In GPA/MPA Study 2, 30 (26%) of the enrolled patients were at least 65 years old, of which 12 patients were exposed to non-U.S.-licensed rituximab and 18 were exposed to azathioprine. The clinical study did not include sufficient numbers of patients aged 65 and over to determine whether they respond differently from younger subjects.

Pemphigus Vulgaris

Of the 46 patients treated with non-U.S.-licensed rituximab, 15 (33%) patients were 65 years of age and older. The clinical study did not include sufficient numbers of patients aged 65 and older to determine whether they respond differently from younger patients.

11 DESCRIPTION

Rituximab-abbs is a genetically engineered chimeric murine/human monoclonal IgG₁ kappa antibody directed against the CD20 antigen. Rituximab-abbs has an approximate molecular weight of 145 kD.

Rituximab-abbs is produced by mammalian cell (Chinese Hamster Ovary) suspension culture in a nutrient medium.

TRUXIMA (rituximab-abbs) injection is a sterile, clear to opalescent, colorless to pale yellow, preservative-free solution for intravenous infusion. TRUXIMA is supplied at a concentration of 10 mg/mL in either 100 mg/10 mL or 500 mg/50 mL single-dose vials. Each mL of solution contains 10 mg rituximab-abbs, polysorbate 80 (0.7 mg), sodium chloride (9 mg), tri-sodium citrate dihydrate (7.35 mg), and Water for Injection, USP. The pH is 6.5.

12 CLINICAL PHARMACOLOGY

12.1 Mechanism of Action

Rituximab-abbs is a monoclonal antibody. Rituximab products target the CD20 antigen expressed on the surface of pre-B and mature B-lymphocytes. Upon binding to CD20, rituximab products mediate B-cell lysis. Possible mechanisms of cell lysis include complement dependent cytotoxicity (CDC) and antibody dependent cell mediated cytotoxicity (ADCC). B cells are believed to play a role in the pathogenesis of rheumatoid arthritis (RA) and associated chronic synovitis. In this setting, B cells may be acting at multiple sites in the autoimmune/inflammatory process, including through production of rheumatoid factor (RF) and other autoantibodies, antigen presentation, T-cell activation, and/or proinflammatory cytokine production.

12.2 Pharmacodynamics

Non-Hodgkin's Lymphoma (NHL)

In NHL patients, administration of rituximab resulted in depletion of circulating and tissue-based B cells. Among 166 patients in NHL Study 1 (NCT000168740), circulating CD19-positive B cells were depleted within the first three weeks with sustained depletion for up to 6 to 9 months post treatment in 83% of patients. B-cell recovery began at approximately 6 months and median B-cell levels returned to normal by 12 months following completion of treatment.

There were sustained and statistically significant reductions in both IgM and IgG serum levels observed from 5 through 11 months following rituximab administration; 14% of patients had IgM and/or IgG serum levels below the normal range.

Rheumatoid Arthritis

In RA patients, treatment with rituximab induced depletion of peripheral B lymphocytes, with the majority of patients demonstrating near complete depletion (CD19 counts below the lower limit of quantification, 20 cells/ μ l) within 2 weeks after receiving the first dose of rituximab. The majority of patients showed peripheral B-cell depletion for at least 6 months. A small proportion of patients (~4%) had prolonged peripheral B-cell depletion lasting more than 3 years after a single course of treatment.

Total serum immunoglobulin levels, IgM, IgG, and IgA were reduced at 6 months with the greatest change observed in IgM. At Week 24 of the first course of rituximab treatment, small proportions of patients experienced decreases in IgM (10%), IgG (2.8%), and IgA (0.8%) levels below the lower limit of normal (LLN). In the experience with rituximab in RA patients during repeated rituximab treatment, 23.3%, 5.5%, and 0.5% of patients experienced decreases in IgM, IgG, and IgA concentrations below LLN at any time after receiving rituximab, respectively. The clinical consequences of decreases in immunoglobulin levels in RA patients treated with rituximab are unclear.

Treatment with rituximab in patients with RA was associated with reduction of certain biologic markers of inflammation such as interleukin-6 (IL-6), C-reactive protein (CRP), serum amyloid protein (SAA), S100 A8/S100 A9 heterodimer complex (S100 A8/9), anti-citrullinated peptide (anti-CCP), and RF.

Granulomatosis with Polyangiitis (GPA) (Wegener's Granulomatosis) and Microscopic Polyangiitis

In GPA and MPA patients in GPA/MPA Study 1, peripheral blood CD19 B-cells depleted to less than 10 cells/ μ L following the first two infusions of rituximab, and remained at that level in most (84%) patients through Month 6. By Month 12, the majority of patients (81%) showed signs of B-cell return with counts greater than 10 cells/ μ L. By Month 18, most patients (87%) had counts greater than 10 cells/ μ L.

In GPA/MPA Study 2 where patients received non-U.S.-licensed rituximab as two 500 mg intravenous infusions separated by two weeks, followed by a 500 mg intravenous infusion at Month 6, 12, and 18, 70% (30 out of 43) of the rituximab-treated patients with CD19+ peripheral B cells evaluated post-baseline had undetectable CD19+ peripheral B cells at Month 24. At Month 24, all 37 patients with evaluable baseline CD19+ peripheral B cells and Month 24 measurements had lower CD19+ B cells relative to baseline.

12.3 Pharmacokinetics

Non-Hodgkin's Lymphoma (NHL)

Pharmacokinetics were characterized in 203 NHL patients receiving 375 mg/m² rituximab weekly by intravenous infusion for 4 doses. Rituximab was detectable in the serum of patients 3 to 6 months after completion of treatment.

The pharmacokinetic profile of rituximab when administered as 6 infusions of 375 mg/m² in combination with 6 cycles of CHOP chemotherapy was similar to that seen with rituximab alone.

Based on a population pharmacokinetic analysis of data from 298 NHL patients who received rituximab once weekly or once every three weeks, the estimated median terminal elimination half-life was 22 days (range, 6.1 to 52 days). Patients with higher CD19-positive cell counts or larger measurable tumor lesions at pretreatment had a higher clearance. However, dose adjustment for pretreatment CD19 count or size of tumor lesion is not necessary. Age and gender had no effect on the pharmacokinetics of rituximab.

Pharmacokinetics were characterized in 21 patients with CLL receiving rituximab according to the recommended dose and schedule. The estimated median terminal half-life of rituximab was 32 days (range, 14 to 62 days).

Rheumatoid Arthritis

Following administration of 2 doses of rituximab in patients with RA, the mean (\pm S.D.; % CV) concentrations after the first infusion (C_{\max} first) and second infusion (C_{\max} second) were 157 (\pm 46; 29%) and 183 (\pm 55; 30%) mcg/mL, and 318 (\pm 86; 27%) and 381 (\pm 98; 26%) mcg/mL for the 2 x 500 mg and 2 x 1,000 mg doses, respectively.

Based on a population pharmacokinetic analysis of data from 2,005 RA patients who received rituximab, the estimated clearance of rituximab was 0.335 L/day; volume of distribution was 3.1 L and mean terminal elimination half-life was 18.0 days (range, 5.17 to 77.5 days). Age, weight and gender had no effect on the pharmacokinetics of rituximab in RA patients.

Granulomatosis with Polyangiitis (GPA) (Wegener's Granulomatosis) and Microscopic Polyangiitis

The PK parameters in adult patients with GPA/MPA receiving 375 mg/m² intravenous rituximab or non-U.S.-licensed rituximab once weekly for four doses are summarized in Table 6.

Table 6
Population PK in adult patients (GPA/MPA Study 1) with GPA/MPA

Parameter	Statistic	Adult GPA/MPA (GPA/MPA Study 1)
N	Number of Patients	97
Terminal Half-life (days)	Median (Range)	25 (11 to 52)
AUC _{0-180d} (mcg/mL*day)	Median (Range)	10302 (3,653 to 21,874)
Clearance (L/day)	Median (Range)	0.279 (0.113 to 0.653)
Volume of Distribution (L)	Median (Range)	3.12 (2.42 to 3.91)

The population PK analysis in adults with GPA and MPA showed that male patients and patients with higher BSA or positive anti-rituximab antibody levels have higher clearance. However, further dose adjustment based on gender or anti-drug antibody status is not necessary.

Pemphigus Vulgaris

The PK parameters in adult PV patients receiving 1,000 mg IV infusion of rituximab at Days 1, 15, 168, and 182 are summarized in Table 7.

Table 7
Population PK in adult PV patients from PV Study 2

Parameter	Infusion Cycle	
	1 st cycle of 1,000 mg Day 1 and Day 15 N=67	2 nd cycle of 1,000 mg Day 168 and Day 182 N=67
Terminal Half-life (days)		
Median	21.1	26.2
(Range)	(9.3 to 36.2)	(16.4 to 42.8)
Clearance (L/day)		
Median	0.30	0.24
(Range)	(0.16 to 1.51)	(0.13 to 0.45)
Central Volume of Distribution (L)		
Median	3.49	3.49
(Range)	(2.48 to 5.22)	(2.48 to 5.22)

Following the first cycle of rituximab administration, the PK parameters of rituximab in patients with PV were similar to those in patients with RA and in patients with GPA/MPA. Following the 2nd cycle of rituximab administration, rituximab clearance decreased by 22% assuming Pemphigus Disease Area Index (PDAI) activity score of 0 at the start of both cycles, while the central volume of distribution remained unchanged. The presence of anti-rituximab antibodies was associated with a higher clearance resulting in lower rituximab concentrations.

Specific Populations

The clearance and volume of distribution of rituximab increased with increasing body surface area (BSA). No formal studies were conducted to examine the effects of either renal or hepatic impairment on the pharmacokinetics of rituximab products.

Drug Interaction Studies

Formal drug interaction studies have not been performed with rituximab products.

13 NONCLINICAL TOXICOLOGY

13.1 Carcinogenesis, Mutagenesis, Impairment of Fertility

No long-term animal studies have been performed to establish the carcinogenic or mutagenic potential of rituximab products or to determine potential effects on fertility in males or females.

14 CLINICAL STUDIES

14.1 Relapsed or Refractory, Low-Grade or Follicular, CD20-Positive, B-Cell NHL

The safety and effectiveness of rituximab in relapsed, refractory CD20+ NHL were demonstrated in 3 single-arm studies enrolling 296 patients.

NHL Study 1

A multicenter, open-label, single-arm study was conducted in 166 patients with relapsed or refractory, low-grade or follicular, B-cell NHL who received 375 mg/m² of rituximab given as an intravenous infusion weekly for 4 doses. Patients with tumor masses >10 cm or with >5,000 lymphocytes/ μ L in the peripheral blood were excluded from the study.

Results are summarized in Table 8. The median time to onset of response was 50 days.

Disease-related signs and symptoms (including B-symptoms) resolved in 64% (25/39) of those patients with such symptoms at study entry.

NHL Study 2

In a multicenter, single-arm study, 37 patients with relapsed or refractory, low-grade NHL received 375 mg/m² of rituximab weekly for 8 doses. Results are summarized in Table 8.

NHL Study 3

In a multicenter, single-arm study, 60 patients received 375 mg/m² of rituximab weekly for 4 doses. All patients had relapsed or refractory, low-grade or follicular, B-cell NHL and had achieved an objective clinical response to rituximab administered 3.8 to 35.6 months (median 14.5 months) prior to retreatment with rituximab. Of these 60 patients, 5 received more than one additional course of rituximab. Results are summarized in Table 8.

Bulky Disease

In pooled data from studies 1 and 3, 39 patients with bulky (single lesion >10 cm in diameter) and relapsed or refractory, low-grade NHL received rituximab 375 mg/m² weekly for 4 doses. Results are summarized in Table 8.

Table 8
Summary of Rituximab Efficacy Data in NHL by Schedule and Clinical Setting

	NHL Study 1 Weekly×4 N=166	NHL Study 2 Weekly×8 N=37	NHL Study 1 and NHL Study 3 Bulky disease, Weekly×4 N=39*	NHL Study 3 Retreatment, Weekly×4 N=60
Overall Response Rate Complete	48%	57%	36%	38%
Response Rate	6%	14%	3%	10%
Median Duration of Response (Months) [Range] ^{†, ‡, §}	11.2 [1.9 to 42.1+]	13.4 [2.5 to 36.5+]	6.9 [2.8 to 25.0+]	15.0 [3.0 to 25.1+]

* Six of these patients are included in the first column. Thus, data from 296 intent-to-treat patients are provided in this table.

† Kaplan-Meier projected with observed range.

‡ “+” indicates an ongoing response.

§ Duration of response: interval from the onset of response to disease progression.

14.2 Previously Untreated, Low-Grade or Follicular, CD20-Positive, B-Cell NHL

The safety and effectiveness of rituximab in previously untreated, low-grade or follicular, CD20+ NHL were demonstrated in 3 randomized, controlled trials enrolling 1,662 patients.

NHL Study 4

A total of 322 patients with previously untreated follicular NHL were randomized (1:1) to receive up to eight 3-week cycles of CVP chemotherapy alone (CVP) or in combination with rituximab 375 mg/m² on Day 1 of each cycle (R-CVP) in an open-label, multicenter study. The main outcome measure of the study was progression-free survival (PFS) defined as the time from randomization to the first of progression, relapse, or death.

Twenty-six percent of the study population was >60 years of age, 99% had Stage III or IV disease, and 50% had an International Prognostic Index (IPI) score greater than or equal to 2. The results for PFS as determined by a blinded, independent assessment of progression are presented in Table 9. The point estimates may be influenced by the presence of informative censoring. The PFS results based on investigator assessment of progression were similar to those obtained by the independent review assessment.

Table 9
Efficacy Results in NHL Study 4

	Study Arm	
	R-CVP N=162	CVP N=160
Median PFS (years)*	2.4	1.4
Hazard ratio (95% CI)†	0.44 (0.29, 0.65)	

* p < 0.0001, two-sided stratified log-rank test.

† Estimates of Cox regression stratified by center.

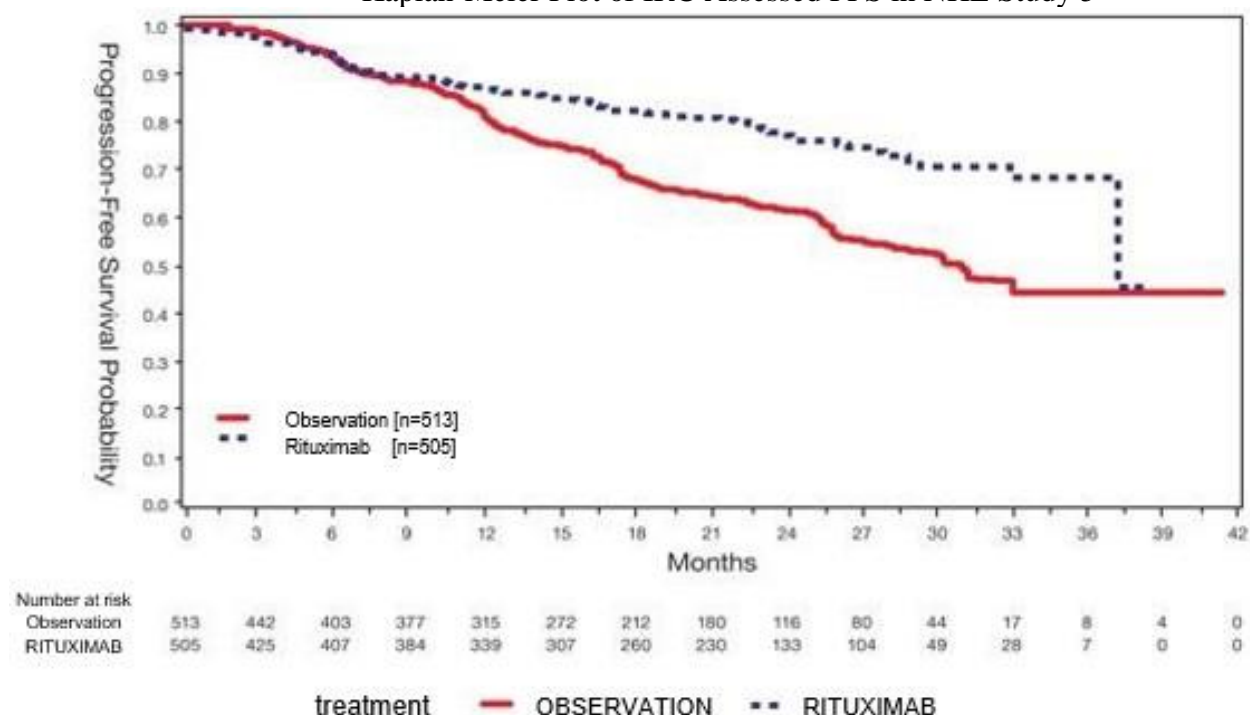
NHL Study 5

An open-label, multicenter, randomized (1:1) study was conducted in 1,018 patients with previously untreated follicular NHL who achieved a response (CR or PR) to rituximab in combination with chemotherapy. Patients were randomized to rituximab as single-agent maintenance therapy, 375 mg/m² every 8 weeks for up to 12 doses or to observation. Rituximab was initiated at 8 weeks following completion of chemotherapy. The main outcome measure of the study was progression-free survival (PFS), defined as the time from randomization in the maintenance/observation phase to progression, relapse, or death, as determined by independent review.

Of the randomized patients, 40% were greater than or equal to 60 years of age, 70% had Stage IV disease, 96% had ECOG performance status (PS) 0 to 1, and 42% had FLIPI scores of 3 to 5. Prior to randomization to maintenance therapy, patients had received R-CHOP (75%), R-CVP (22%), or R-FCM (3%); 71% had a complete or unconfirmed complete response and 28% had a partial response.

PFS was longer in patients randomized to rituximab as single agent maintenance therapy (HR: 0.54, 95% CI: 0.42, 0.70). The PFS results based on investigator assessment of progression were similar to those obtained by the independent review assessment.

Figure 1
Kaplan-Meier Plot of IRC Assessed PFS in NHL Study 5



NHL Study 6

A total of 322 patients with previously untreated low-grade, B-cell NHL who did not progress after 6 or 8 cycles of CVP chemotherapy were enrolled in an open-label, multicenter, randomized trial. Patients were randomized (1:1) to receive rituximab, 375 mg/m² intravenous infusion, once weekly for 4 doses every 6 months for up to 16 doses or no further therapeutic intervention. The main outcome measure of the study was progression-free survival defined as the time from randomization to progression, relapse, or death. Thirty-seven percent of the study population was greater than 60 years of age, 99% had Stage III or IV disease, and 63% had an IPI score greater than or equal to 2.

There was a reduction in the risk of progression, relapse, or death (hazard ratio estimate in the range of 0.36 to 0.49) for patients randomized to rituximab as compared to those who received no additional treatment.

14.3 Diffuse Large B-Cell NHL (DLBCL)

The safety and effectiveness of rituximab were evaluated in three randomized, active-controlled, open-label, multicenter studies with a collective enrollment of 1,854 patients. Patients with previously untreated diffuse large B-cell NHL received rituximab in combination with cyclophosphamide, doxorubicin, vincristine, and prednisone (CHOP) or other anthracycline-based chemotherapy regimens.

NHL Study 7

A total of 632 patients age greater than or equal to 60 years with DLBCL (including primary mediastinal B-cell lymphoma) were randomized in a 1:1 ratio to treatment with CHOP or R-CHOP. Patients received 6 or 8 cycles of CHOP, each cycle lasting 21 days. All patients in the R-CHOP arm received 4 doses of rituximab 375 mg/m² on Days -7 and -3 (prior to Cycle 1) and 48 to 72 hours prior to Cycles 3 and 5. Patients who received 8 cycles of CHOP also received rituximab prior to Cycle 7. The main outcome measure of the study was progression-free survival, defined as the time from randomization to the first of progression, relapse, or death. Responding patients underwent a second randomization to receive rituximab or no further therapy.

Among all enrolled patients, 62% had centrally confirmed DLBCL histology, 73% had Stage III-IV disease, 56% had IPI scores greater than or equal to 2, 86% had ECOG performance status of <2, 57% had elevated LDH levels, and 30% had two or more extranodal disease sites involved. Efficacy results are presented in Table 10. These results reflect a statistical approach which allows for an evaluation of rituximab administered in the induction setting that excludes any potential impact of rituximab given after the second randomization.

Analysis of results after the second randomization in NHL Study 7 demonstrates that for patients randomized to R-CHOP, additional rituximab exposure beyond induction was not associated with further improvements in progression-free survival or overall survival.

NHL Study 8

A total of 399 patients with DLBCL, age greater than or equal to 60 years, were randomized in a 1:1 ratio to receive CHOP or R-CHOP. All patients received up to eight 3-week cycles of CHOP induction; patients in the R-CHOP arm received rituximab 375 mg/m² on Day 1 of each cycle. The main outcome measure of the study was event-free survival, defined as the time from randomization to relapse, progression, change in therapy, or death from any cause. Among all enrolled patients, 80% had Stage III or IV disease, 60% of patients had an age-adjusted IPI greater than or equal to 2, 80% had ECOG performance status scores less than 2, 66% had elevated LDH levels, and 52% had extranodal involvement in at least two sites. Efficacy results are presented in Table 10.

NHL Study 9

A total of 823 patients with DLBCL, aged 18 to 60 years, were randomized in a 1:1 ratio to receive an anthracycline-containing chemotherapy regimen alone or in combination with rituximab. The main outcome

measure of the study was time to treatment failure, defined as time from randomization to the earliest of progressive disease, failure to achieve a complete response, relapse, or death. Among all enrolled patients, 28% had Stage III-IV disease, 100% had IPI scores of less than or equal to 1, 99% had ECOG performance status of <2, 29% had elevated LDH levels, 49% had bulky disease, and 34% had extranodal involvement. Efficacy results are presented in Table 10.

Table 10
Efficacy Results in NHL Studies 7, 8, and 9

	NHL Study 7 (n=632)		NHL Study 8 (n=399)		NHL Study 9 (n=823)	
	R-CHOP Progression-free survival (years)	CHOP	R-CHOP Event-free survival (years)	CHOP	R-Chemo Time to treatment failure (years)	Chemo
Main outcome						
Median of main outcome measure	3.1	1.6	2.9	1.1	NE [†]	NE [†]
Hazard ratio [§]	0.69 [*]		0.60 [*]		0.45 [*]	
Overall survival at 2 years [‡]	74%	63%	69%	58%	95%	86%
Hazard ratio [§]	0.72 [*]		0.68 [*]		0.40 [*]	

* Significant at p <0.05, 2-sided.

[†] NE=Not reliably estimable.

[‡] Kaplan-Meier estimates.

[§] R-CHOP vs. CHOP.

In NHL Study 8, overall survival estimates at 5 years were 58% vs. 46% for R-CHOP and CHOP, respectively.

14.4 Ninety-Minute Infusions in Previously Untreated Follicular NHL and DLBCL

In NHL Study 10, a total of 363 patients with previously untreated follicular NHL (n=113) or DLBCL (n=250) were evaluated in a prospective, open-label, multi-center, single-arm trial for the safety of 90-minute rituximab infusions. Patients with follicular NHL received rituximab 375 mg/m² plus CVP chemotherapy. Patients with DLBCL received rituximab 375 mg/m² plus CHOP chemotherapy. Patients with clinically significant cardiovascular disease were excluded from the study. Patients were eligible for a 90-minute infusion at Cycle 2 if they did not experience a Grade 3-4 infusion-related adverse event with Cycle 1 and had a circulating lymphocyte count less than or equal to 5,000/mm³ before Cycle 2. All patients were pre-medicated with acetaminophen and an antihistamine and received the glucocorticoid component of their chemotherapy prior to rituximab infusion. The main outcome measure was the development of Grade 3-4 infusion-related reactions on the day of, or day after, the 90-minute infusion at Cycle 2 [see *Adverse Reactions (6.1)*].

Eligible patients received their Cycle 2 rituximab infusion over 90 minutes as follows: 20% of the total dose given in the first 30 minutes and the remaining 80% of the total dose given over the next 60 minutes [see *Dosage and Administration (2.1)*]. Patients who tolerated the 90-minute rituximab infusion at Cycle 2 continued to receive subsequent rituximab infusions at the 90-minute infusion rate for the remainder of the treatment regimen (through Cycle 6 or Cycle 8).

The incidence of Grade 3-4 infusion-related reactions at Cycle 2 was 1.1% (95% CI [0.3%, 2.8%]) among all patients, 3.5% (95% CI [1.0%, 8.8%]) for those patients treated with R-CVP, and 0.0% (95% CI [0.0%, 1.5%]) for those patients treated with R-CHOP. For Cycles 2 to 8, the incidence of Grade 3-4 infusion-related reactions was 2.8% (95% CI [1.3%, 5.0%]). No acute fatal infusion-related reactions were observed.

14.5 Chronic Lymphocytic Leukemia (CLL)

The safety and effectiveness of rituximab were evaluated in two randomized (1:1) multicenter open-label studies comparing FC alone or in combination with rituximab for up to 6 cycles in patients with previously untreated CLL [CLL Study 1 (n=817)] or previously treated CLL [CLL Study 2 (n=552)]. Patients received

fludarabine 25 mg/m²/day and cyclophosphamide 250 mg/m²/day on days 1, 2 and 3 of each cycle, with or without rituximab. In both studies, seventy-one percent of CLL patients received 6 cycles and 90% received at least 3 cycles of rituximab-based therapy.

In CLL Study 1, 30% of patients were 65 years or older, 31% were Binet stage C, 45% had B symptoms, more than 99% had ECOG performance status (PS) 0 to 1, 74% were male, and 100% were White. In CLL Study 2, 44% of patients were 65 years or older, 28% had B symptoms, 82% received a prior alkylating drug, 18% received prior fludarabine, 100% had ECOG PS 0 to 1, 67% were male and 98% were White.

The main outcome measure in both studies was progression-free survival (PFS), defined as the time from randomization to progression, relapse, or death, as determined by investigators (CLL Study 1) or an independent review committee (CLL Study 2). The investigator assessed results in CLL Study 2 were supportive of those obtained by the independent review committee. Efficacy results are presented in Table 11.

Table 11
Efficacy Results in CLL Studies 1 and 2

	CLL Study 1* (Previously untreated)		CLL Study 2* (Previously treated)	
	R-FC N =408	FC N=409	R-FC N=276	FC N =276
Median PFS (months)	39.8	31.5	26.7	21.7
Hazard ratio (95% CI)	0.56 (0.43, 0.71)		0.76 (0.6, 0.96)	
P value (Log-Rank test)	<0.01		0.02	
Response rate (95% CI)	86% (82, 89)	73% (68, 77)	54% (48, 60)	45% (37, 51)

* As defined in 1996 National Cancer Institute Working Group guidelines.

Across both studies, 243 of 676 rituximab-treated patients (36%) were 65 years of age or older and 100 rituximab-treated patients (15%) were 70 years of age or older. The results of exploratory subset analyses in elderly patients are presented in Table 12.

Table 12
Efficacy Results in CLL Studies 1 and 2 in Subgroups Defined by Age*

Age subgroup	CLL Study 1		CLL Study 2	
	Number of Patients	Hazard Ratio for PFS (95% CI)	Number of Patients	Hazard Ratio for PFS (95% CI)
Age less than 65 yrs	572	0.52 (0.39, 0.70)	313	0.61 (0.45, 0.84)
Age greater than or equal to 65 yrs	245	0.62 (0.39, 0.99)	233	0.99 (0.70, 1.40)
Age less than 70 yrs	736	0.51 (0.39, 0.67)	438	0.67 (0.51, 0.87)
Age greater than or equal to 70 yrs	81	1.17 (0.51, 2.66)	108	1.22 (0.73, 2.04)

* From exploratory analyses.

14.6 Rheumatoid Arthritis (RA)

Reducing the Signs and Symptoms: Initial and Re-Treatment Courses

The efficacy and safety of rituximab were evaluated in two randomized, double-blind, placebo-controlled studies of adult patients with moderately to severely active RA who had a prior inadequate response to at least one TNF inhibitor. Patients were 18 years of age or older, diagnosed with active RA according to American College of Rheumatology (ACR) criteria, and had at least 8 swollen and 8 tender joints.

In RA Study 1 (NCT00468546), patients were randomized to receive either rituximab 2 x 1,000 mg + MTX or placebo + MTX for 24 weeks. Further courses of rituximab 2 x 1,000 mg + MTX were administered in an open label extension study at a frequency determined by clinical evaluation, but no sooner than 16 weeks after the preceding course of rituximab. In addition to the intravenous premedication, glucocorticoids were administered orally on a tapering schedule from baseline through Day 14. The proportions of patients achieving ACR 20, 50, and 70 responses at Week 24 of the placebo-controlled period are shown in Table 13.

In RA Study 2 (NCT00266227), all patients received the first course of rituximab 2 x 1,000 mg + MTX. Patients who experienced ongoing disease activity were randomized to receive a second course of either rituximab 2 x 1,000 mg + MTX or placebo + MTX, the majority between Weeks 24 to 28. The proportions of patients achieving ACR 20, 50, and 70 responses at Week 24, before the re-treatment course, and at Week 48, after retreatment, are shown in Table 13.

Table 13
ACR Responses in RA Study 1 and RA Study 2 (Percent of Patients)
(Modified Intent-to-Treat Population)

Inadequate Response to TNF Antagonists							
RA Study 1 24 Week Placebo-Controlled (Week 24)				RA Study 2 Placebo-Controlled Retreatments (Week 24 and Week 48)			
Response	Placebo + MTX n = 201	Rituximab + MTX n = 298	Treatment Difference (Rituximab – Placebo) ‡ (95% CI)	Response	Placebo + MTX Retreatment n = 157	Rituximab + MTX Retreatment n = 318	Treatment Difference (Rituximab – Placebo) *,†,‡ (95% CI)
ACR20 Week 24	18%	51%	33% (26%, 41%)	ACR20 Week 24	48%	45%	NA
				Week 48	45%	54%	11% (2%, 20%)
ACR50 Week 24	5%	27%	21% (15%, 27%)	ACR50 Week 24	27%	21%	NA
				Week 48	26%	29%	4% (-4%, 13%)
ACR70 Week 24	1%	12%	11% (7%, 15%)	ACR70 Week 24	11%	8%	NA
				Week 48	13%	14%	1% (-5%, 8%)

* In RA Study 2, all patients received a first course of rituximab 2 x 1,000 mg. Patients who experienced ongoing disease activity were randomized to receive a second course of either rituximab 2 x 1,000 mg + MTX or placebo + MTX at or after Week 24.

† Since all patients received a first course of rituximab, no comparison between Placebo + MTX and rituximab + MTX is made at Week 24.

‡ For RA Study 1, weighted difference stratified by region (US, rest of the world) and Rheumatoid Factor (RF) status (positive greater than 20 IU/mL, negative <20 IU/mL) at baseline; For RA Study 2, weighted difference stratified by RF status at baseline and greater than or equal to 20% improvement from baseline in both SJC and TJC at Week 24 (Yes/No).

Improvement was also noted for all components of ACR response following treatment with rituximab, as shown in Table 14.

Table 14
Components of ACR Response at Week 24 in RA Study 1
(Modified Intent-to-Treat Population)

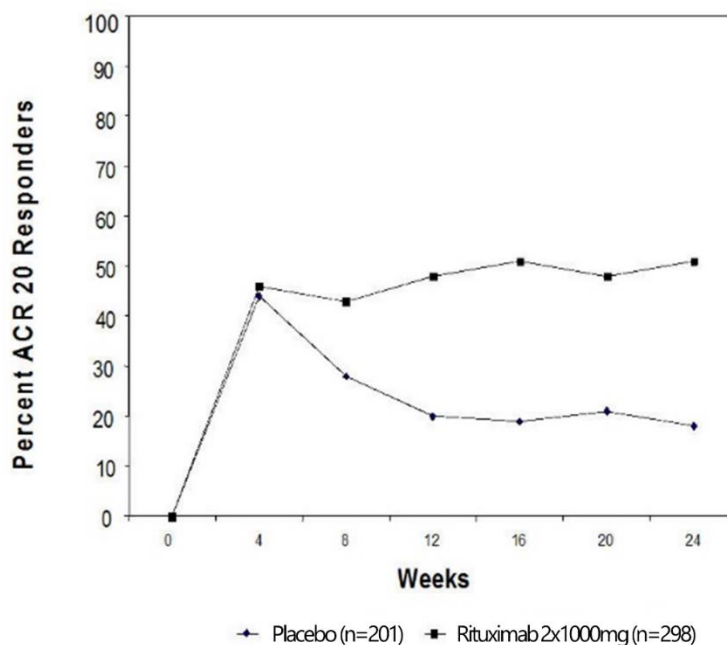
Inadequate Response to TNF Antagonists				
Parameter (median)	Placebo + MTX (n = 201)		Rituximab + MTX (n = 298)	
	Baseline	Wk 24	Baseline	Wk 24
Tender Joint Count	31.0	27.0	33.0	13.0
Swollen Joint Count	20.0	19.0	21.0	9.5
Physician Global Assessment*	71.0	69.0	71.0	36.0
Patient Global Assessment*	73.0	68.0	71.0	41.0
Pain*	68.0	68.0	67.0	38.5
Disability Index (HAQ)†	2.0	1.9	1.9	1.5
CRP (mg/dL)	2.4	2.5	2.6	0.9

* Visual Analogue Scale: 0=best, 100=worst.

† Disability Index of the Health Assessment Questionnaire: 0=best, 3=worst.

The time course of ACR 20 response for RA Study 1 is shown in Figure 2. Although both treatment groups received a brief course of intravenous and oral glucocorticoids, resulting in similar benefits at Week 4, higher ACR 20 responses were observed for the rituximab group by Week 8. A similar proportion of patients achieved these responses through Week 24 after a single course of treatment (2 infusions) with rituximab. Similar patterns were demonstrated for ACR 50 and 70 responses.

Figure 2
Percent of Patients Achieving ACR 20 Response by Visit*
RA Study 1 (Inadequate Response to TNF Antagonists)



* The same patients may not have responded at each time point.

Radiographic Response

In RA Study 1, structural joint damage was assessed radiographically and expressed as changes in Genant-modified Total Sharp Score (TSS) and its components, the erosion score (ES) and the joint space narrowing (JSN) score. Rituximab + MTX slowed the progression of structural damage compared to placebo + MTX after 1 year as shown in Table 15.

Table 15
Mean Radiographic Change From Baseline to 104 Weeks in RA Study 1

Parameter	Inadequate Response to TNF Antagonists		Treatment Difference (Placebo –Rituximab)	95% CI
	Rituximab 2 x 1,000 mg + MTX [†]	Placebo + MTX [‡]		
<u>Change during First Year</u>				
TSS	0.66	1.77	1.11	(0.47, 1.75)
ES	0.44	1.19	0.75	(0.32, 1.19)
JSN Score	0.22	0.58	0.36	(0.10, 0.62)
<u>Change during Second Year*</u>				
TSS	0.48	1.04	-	-
ES	0.28	0.62	-	-
JSN Score	0.20	0.42	-	-

* Based on radiographic scoring following 104 weeks of observation.

[†] Patients received up to 2 years of treatment with rituximab + MTX.

[‡] Patients receiving Placebo + MTX. Patients receiving Placebo + MTX could have received retreatment with rituximab + MTX from Week 16 onward.

In RA Study 1 and its open-label extension, 70% of patients initially randomized to rituximab + MTX and 72% of patients initially randomized to placebo + MTX were evaluated radiographically at Year 2. As shown in Table 15, progression of structural damage in rituximab + MTX patients was further reduced in the second year of treatment.

Following 2 years of treatment with rituximab + MTX, 57% of patients had no progression of structural damage. During the first year, 60% of rituximab + MTX treated patients had no progression, defined as a change in TSS of zero or less compared to baseline, compared to 46% of placebo + MTX treated patients. In their second year of treatment with rituximab + MTX, more patients had no progression than in the first year (68% vs. 60%), and 87% of the rituximab + MTX treated patients who had no progression in the first year also had no progression in the second year.

Lesser Efficacy of 500 Vs. 1,000 mg Treatment Courses for Radiographic Outcomes

RA Study 3 (NCT00299104) is a randomized, double-blind, placebo-controlled study which evaluated the effect of placebo + MTX compared to rituximab 2 x 500 mg + MTX and rituximab 2 x 1,000 mg + MTX treatment courses in MTX-naïve RA patients with moderately to severely active disease. Patients received a first course of two infusions of rituximab or placebo on Days 1 and 15. MTX was initiated at 7.5 mg/week and escalated up to 20 mg/week by Week 8 in all three treatment arms. After a minimum of 24 weeks, patients with ongoing disease activity were eligible to receive re-treatment with additional courses of their assigned treatment. After one year of treatment, the proportion of patients achieving ACR 20/50/70 responses were similar in both rituximab dose groups and were higher than in the placebo group. However, with respect to radiographic scores, only the rituximab 1,000 mg treatment group demonstrated a statistically significant reduction in TSS: a change of 0.36 units compared to 1.08 units for the placebo group, a 67% reduction.

Physical Function Response

RA Study 4 (NCT00299130) is a randomized, double-blind, placebo-controlled study in adult RA patients with moderately to severely active disease with inadequate response to MTX. Patients were randomized to receive an

initial course of rituximab 500 mg, rituximab 1,000 mg, or placebo in addition to background MTX.

Physical function was assessed at Weeks 24 and 48 using the Health Assessment Questionnaire Disability Index (HAQ-DI). From baseline to Week 24, a greater proportion of rituximab-treated patients had an improvement in HAQ-DI of at least 0.22 (a minimal clinically important difference) and a greater mean HAQ-DI improvement compared to placebo, as shown in Table 16. HAQ-DI results for the rituximab 500 mg treatment group were similar to the rituximab 1,000 mg treatment group; however radiographic responses were not assessed (see Dosing Precaution in the Radiographic Responses section above). These improvements were maintained at 48 weeks.

Table 16
Improvement from Baseline in Health Assessment
Questionnaire Disability Index (HAQ-DI) at Week 24 in RA Study 4

	Placebo + MTX n=172	Rituximab 2 x 1,000 mg+ MTX n=170	Treatment Difference (Rituximab-Placebo) [†] (95% CI)
Mean Improvement from Baseline	0.19	0.42	0.23 (0.11, 0.34)
Percent of patients with “Improved” score (Change from Baseline greater than or equal to MCID) [*]	48%	58%	11% (0%, 21%)

* Minimal Clinically Important Difference: MCID for HAQ=0.22.

† Adjusted difference stratified by region (US, rest of the world) and rheumatoid factor (RF) status (positive greater than or equal to 20 IU/mL, negative less than 20 IU/mL) at baseline.

14.7 Granulomatosis with Polyangiitis (GPA) (Wegener’s Granulomatosis) and Microscopic Polyangiitis (MPA)

Induction Treatment of Adult Patients with Active Disease (GPA/MPA Study 1)

A total of 197 patients with active, severe GPA and MPA (two forms of ANCA Associated Vasculitides) were treated in a randomized, double-blind, active-controlled, multicenter, non-inferiority study, conducted in two phases – a 6-month remission induction phase and a 12-month remission maintenance phase. Patients were 15 years of age or older, diagnosed with GPA (75% of patients) or MPA (24% of patients) according to the Chapel Hill Consensus conference criteria (1% of the patients had unknown vasculitis type). All patients had active disease, with a Birmingham Vasculitis Activity Score for Granulomatosis with Polyangiitis (BVAS/GPA) greater than or equal to 3, and their disease was severe, with at least one major item on the BVAS/GPA. Ninety-six (49%) of patients had new disease and 101 (51%) of patients had relapsing disease.

Patients in both arms received 1,000 mg of pulse intravenous methylprednisolone per day for 1 to 3 days within 14 days prior to initial infusion. Patients were randomized in a 1:1 ratio to receive either rituximab 375 mg/m² once weekly for 4 weeks or oral cyclophosphamide 2 mg/kg daily for 3 to 6 months in the remission induction phase. Patients were pre-medicated with antihistamine and acetaminophen prior to rituximab infusion. Following intravenous corticosteroid administration, all patients received oral prednisone (1 mg/kg/day, not exceeding 80 mg/day) with pre-specified tapering. Once remission was achieved or at the end of the 6-month remission induction period, the cyclophosphamide group received azathioprine to maintain remission. The rituximab group did not receive additional therapy to maintain remission. The main outcome measure for both GPA and MPA patients was achievement of complete remission at 6 months defined as a BVAS/GPA of 0, and off glucocorticoid therapy. The pre-specified non-inferiority margin was a treatment difference of 20%. As shown in Table 17, the study demonstrated non-inferiority of rituximab to cyclophosphamide for complete remission at 6 months.

Table 17
Percentage of Patients with GPA/MPA Who Achieved
Complete Remission at 6 Months (Intent-to-Treat Population)

	Rituximab (n=99)	Cyclophosphamide (n=98)	Treatment Difference (Rituximab – Cyclophosphamide)
Rate	64%	53%	11%
95.1% [†] CI	(54%, 73%)	(43%, 63%)	(-3%, 24%)*

* non-inferiority was demonstrated because the lower bound was higher than the prespecified non-inferiority margin (-3% greater than -20%).

[†] The 95.1% confidence level reflects an additional 0.001 alpha to account for an interim efficacy analysis.

Complete Remission (CR) at 12 and 18 months

In the rituximab group, 44% of patients achieved CR at 6 and 12 months, and 38% of patients achieved CR at 6, 12, and 18 months. In patients treated with cyclophosphamide (followed by azathioprine for maintenance of CR), 38% of patients achieved CR at 6 and 12 months, and 31% of patients achieved CR at 6, 12, and 18 months.

Retreatment of Flares with Rituximab

Based upon investigator judgment, 15 patients received a second course of rituximab therapy for treatment of relapse of disease activity which occurred between 8 and 17 months after the induction treatment course of rituximab.

Follow up Treatment of Adult Patients with GPA/MPA who have achieved disease control with other Immunosuppressant (GPA/MPA Study 2)

A total of 115 patients (86 with GPA, 24 with MPA, and 5 with renal-limited ANCA-associated vasculitis) in disease remission were randomized to receive azathioprine (58 patients) or non-U.S.-licensed rituximab (57 patients) in this open-label, prospective, multi-center, randomized, active-controlled study. Eligible patients were 21 years and older and had either newly diagnosed (80%) or relapsing disease (20%). A majority of the patients were ANCA-positive. Remission of active disease was achieved using a combination of glucocorticoids and cyclophosphamide. Within a maximum of 1 month after the last cyclophosphamide dose, eligible patients (based on BVAS of 0), were randomized in a 1:1 ratio to receive either non-U.S.-licensed rituximab or azathioprine.

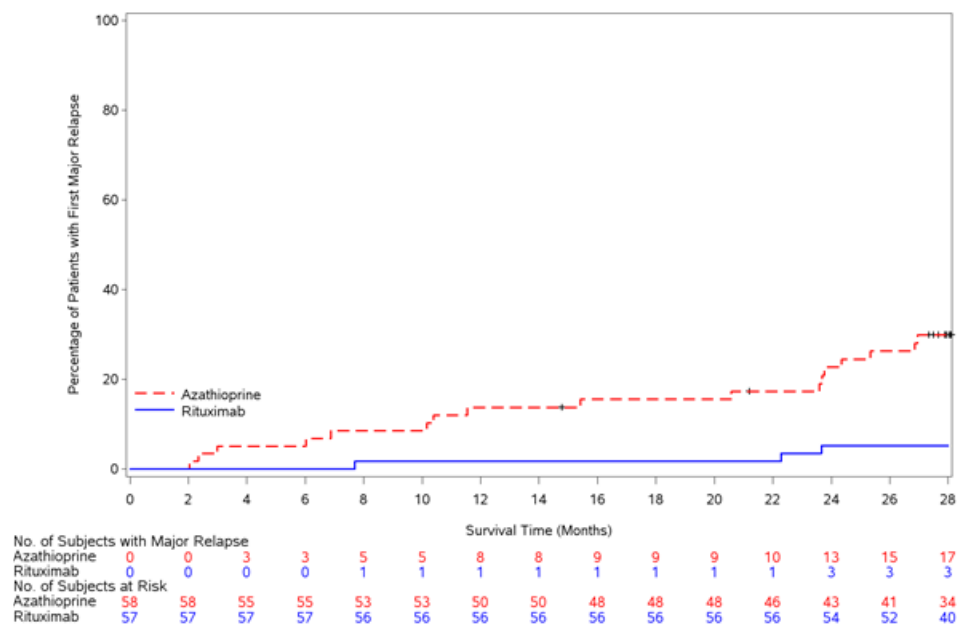
The non-U.S.-licensed rituximab was administered as two 500 mg intravenous infusions separated by two weeks (on Day 1 and Day 15) followed by a 500 mg intravenous infusion every 6 months for 18 months. Azathioprine was administered orally at a dose of 2 mg/kg/day for 12 months, then 1.5 mg/kg/day for 6 months, and finally 1 mg/kg/day for 4 months; treatment was discontinued after 22 months. Prednisone treatment was tapered and then kept at a low dose (approximately 5 mg per day) for at least 18 months after randomization. Prednisone dose tapering and the decision to stop prednisone treatment after Month 18 were left at the investigator's discretion.

Planned follow-up was until Month 28 (10 or 6 months, respectively, after the last non-U.S.-licensed rituximab infusion or azathioprine dose). The primary endpoint was the occurrence of major relapse (defined by the reappearance of clinical and/or laboratory signs of vasculitis activity that could lead to organ failure or damage, or could be life threatening) through Month 28.

By Month 28, major relapse occurred in 3 patients (5%) in the non-U.S.-licensed rituximab group and 17 patients (29%) in the azathioprine group.

The observed cumulative incidence rate of first major relapse during the 28 months was lower in patients on non-U.S.-licensed rituximab relative to azathioprine (Figure 3).

Figure 3
Cumulative Incidence Over Time of First Major Relapse in Patients with GPA/MPA



Patients were censored at the last follow-up dates if they had no event

14.8 Pemphigus Vulgaris (PV)

PV Study 1 (NCT00784589)

Non-U.S.-licensed rituximab in combination with short-term prednisone was compared to prednisone monotherapy as first-line treatment in 90 newly diagnosed adult patients with moderate to severe pemphigus (74 Pemphigus Vulgaris [PV] and 16 Pemphigus Foliaceus [PF]) in this randomized, open-label, controlled, multicenter study (PV Study 1). Patients were between 19 and 79 years of age and had not received prior therapies for pemphigus. In the PV population, 5 (13%) patients in the group treated with non-U.S.-licensed rituximab and 3 (8%) patients in the prednisone group had moderate disease and 33 (87%) patients in the group treated with non-U.S.-licensed rituximab and 33 (92%) patients in the prednisone group had severe disease according to disease severity defined by Harman’s criteria.

Patients were stratified by baseline disease severity (moderate or severe) and randomized 1:1 to receive either the non-U.S.-licensed rituximab and short-term prednisone or long-term prednisone monotherapy. Patients were pre-medicated with antihistamine, acetaminophen and methylprednisolone prior to infusion of the non-U.S.-licensed rituximab. Patients randomized to the group treated with non-U.S.-licensed rituximab received an initial intravenous infusion of 1,000 mg non-U.S.-licensed rituximab on Study Day 1 in combination with a short-term regimen of 0.5 mg/kg/day oral prednisone tapered off over 3 months if they had moderate disease or 1 mg/kg/day oral prednisone tapered off over 6 months if they had severe disease. All patients received a second intravenous infusion of 1,000 mg non-U.S.-licensed rituximab on Study Day 15. Maintenance infusions of 500 mg non-U.S.-licensed rituximab were administered at Months 12 and 18. Patients randomized to the prednisone monotherapy group received an initial 1 mg/kg/day oral prednisone tapered off over 12 months if they had moderate disease or 1.5 mg/kg/day oral prednisone tapered off over 18 months if they had severe disease. Patients in the group

treated with non-U.S.-licensed rituximab who relapsed could receive an additional infusion of 1,000 mg non-U.S.-licensed rituximab in combination with reintroduced or escalated prednisone dose. Maintenance and relapse infusions were administered no sooner than 16 weeks following the previous infusion.

The primary endpoint for the study was complete remission (complete epithelialization and absence of new and/or established lesions) at Month 24 without the use of prednisone therapy for 2 months or more (CROff for greater than or equal to 2 months).

The results of the trial are presented in Table 18.

Table 18

Percentage of Pemphigus Patients in Complete Remission Off Corticosteroid Therapy for Two Months or More (CROff greater than or equal to 2 months) at Month 24, PV Study 1 (Intent-to-Treat Population)

	Non-U.S. licensed rituximab + short-term prednisone N=46	Prednisone N=44
Number of responders (response rate [%])	41 (89%)	15 (34%)
PV Patients	34/38 (90%)	10/36 (28%)
PF Patients	7/8 (88%)	5/8 (63%)

PV Study 2 (NCT02383589)

In a randomized, double-blind, double-dummy, active-comparator, multicenter study, the efficacy and safety of rituximab compared to mycophenolate mofetil (MMF) were evaluated in patients with moderate-to-severe PV receiving 60 to 120 mg/day oral prednisone or equivalent (1.0 to 1.5 mg/kg/day) at study entry and tapered to reach a dose of 60 or 80 mg/day by Day 1. Patients had a confirmed diagnosis of PV within the previous 24 months and evidence of moderate-to-severe disease defined as a total Pemphigus Disease Area Index (PDAI) activity score of greater than or equal to 15. The study consisted of a screening period of up to 28 days, a 52-week double-blind treatment period, and a 48-week safety follow up period.

One hundred and thirty-five patients were randomized to treatment with rituximab 1,000 mg administered on Day 1, Day 15, Week 24 and Week 26 or oral MMF 2 g/day (starting at 1 g/day on Day 1 and titrated to achieve a goal of 2 g/day by Week 2) for 52 weeks in combination with an initial dose of 60 or 80 mg oral prednisone with the aim of tapering to 0 mg/day by Week 24. Randomization was stratified by duration of PV (within the 1 year prior to screening or greater than 1 year) and geographical region. A dual-assessor approach was used during the study for efficacy and safety evaluations to prevent potential unblinding.

One hundred and twenty-five patients (excluding exploratory data from ten telemedicine patients) were analyzed for efficacy (Modified Intent-to-Treat Population). The primary efficacy endpoint for this study was the proportion of subjects achieving sustained complete remission defined as achieving healing of lesions with no new active lesions (i.e., PDAI activity score of 0) while on 0 mg/day prednisone or equivalent, and maintaining this response for at least 16 consecutive weeks, during the 52-week treatment period.

Secondary endpoints included cumulative oral corticosteroid dose and the total number of disease flares.

The results of the trial are presented in Table 19

Table 19

Percentage of PV Patients Who Achieved Sustained Complete Remission Off Corticosteroid Therapy for 16 Weeks or More at Week 52 (Modified Intent-to-Treat Population)

	Rituximab (N= 62)	MMF (N = 63)	Difference (95% CI)
Numbers of responders (response rate [%])	25 (40.3%)	6 (9.5%)	30.80% (14.70%, 45.15%)

MMF = Mycophenolate mofetil. CI = Confidence Interval

Glucocorticoid exposure

The median (min, max) cumulative oral prednisone dose at Week 52 was 2,775 mg (450, 22,180) in the rituximab group compared to 4,005 mg (900, 19,920) in the MMF group. Topical corticosteroid use and pre-infusion IV methylprednisolone were not included in this analysis. Prior to each infusion, the rituximab group received IV methylprednisolone 100 mg and the MMF group received IV saline solution.

Disease flare

Disease flare was defined as an appearance of 3 or more new lesions a month that do not heal spontaneously within 1 week or by the extension of established lesions in a patient who has achieved disease control. The total number of disease flares was lower in patients treated with rituximab compared to MMF (6 vs. 44).

16 HOW SUPPLIED/STORAGE AND HANDLING

TRUXIMA (rituximab-abbs) injection is a sterile, clear to opalescent, colorless to pale yellow, preservative-free solution for intravenous infusion supplied as a carton containing one 100 mg/10 mL (10 mg/mL) single-dose vial (NDC 63459-103-10) or a carton containing one 500 mg/50 mL (10 mg/mL) single-dose vial (NDC 63459-104-50).

Store TRUXIMA vials refrigerated at 2°C to 8°C (36°F to 46°F). TRUXIMA vials should be protected from direct sunlight. Do not freeze or shake.

17 PATIENT COUNSELING INFORMATION

Advise the patient to read the FDA-approved patient labeling (Medication Guide).

Infusion-Related Reactions

Inform patients about the signs and symptoms of infusion-related reactions. Advise patients to contact their healthcare provider immediately to report symptoms of infusion-related reactions including urticaria, hypotension, angioedema, sudden cough, breathing problems, weakness, dizziness, palpitations, or chest pain [*see Warnings and Precautions (5.1)*].

Severe Mucocutaneous Reactions

Advise patients to contact their healthcare provider immediately for symptoms of severe mucocutaneous reactions, including painful sores or ulcers on the mouth, blisters, peeling skin, rash, and pustules [*see Warnings and Precautions (5.2)*].

Hepatitis B Virus Reactivation

Advise patients to contact their healthcare provider immediately for symptoms of hepatitis including worsening fatigue or yellow discoloration of skin or eyes [*see Warnings and Precautions (5.3)*].

Progressive Multifocal Leukoencephalopathy (PML)

Advise patients to contact their healthcare provider immediately for signs and symptoms of PML, including

new or changes in neurological symptoms such as confusion, dizziness or loss of balance, difficulty talking or walking, decreased strength or weakness on one side of the body, or vision problems [*see Warnings and Precautions (5.4)*].

Tumor Lysis Syndrome (TLS)

Advise patients to contact their healthcare provider immediately for signs and symptoms of tumor lysis syndrome such as nausea, vomiting, diarrhea, and lethargy [*see Warnings and Precautions (5.5)*].

Infections

Advise patients to contact their healthcare provider immediately for signs and symptoms of infections including fever, cold symptoms (e.g., rhinorrhea or laryngitis), flu symptoms (e.g., cough, fatigue, body aches), earache or headache, dysuria, oral herpes simplex infection, and painful wounds with erythema and advise patients of the increased risk of infections during and after treatment with TRUXIMA [*see Warnings and Precautions (5.6)*].

Cardiovascular Adverse Reactions

Advise patients of the risk of cardiovascular adverse reactions, including ventricular fibrillation, myocardial infarction, and cardiogenic shock. Advise patients to contact their healthcare provider immediately to report chest pain and irregular heartbeats [*see Warnings and Precautions (5.7)*].

Renal Toxicity

Advise patients of the risk of renal toxicity. Inform patients of the need for healthcare providers to monitor kidney function [*see Warnings and Precautions (5.8)*].

Bowel Obstruction and Perforation

Advise patients to contact their healthcare provider immediately for signs and symptoms of bowel obstruction and perforation, including severe abdominal pain or repeated vomiting [*see Warnings and Precautions (5.9)*].

Embryo-Fetal Toxicity

Advise pregnant women of the potential risk to a fetus. Advise females of reproductive potential to inform their healthcare provider of a known or suspected pregnancy [*see Warnings and Precautions (5.11) and Use in Specific Populations (8.1)*].

Advise females of reproductive potential to use effective contraception during treatment with TRUXIMA and for 12 months after the last dose [*see Use in Specific Populations (8.3)*].

Lactation

Advise women not to breastfeed during treatment with TRUXIMA and for 6 months after the last dose [*see Use in Specific Populations (8.2)*].

Brands listed are the trademarks of their respective owners.

TRUXIMA® [rituximab-abbs]

TRUXIMA® is a registered trademark of CELLTRION, Inc.

Manufactured by:

CELLTRION, Inc

20, Academy-ro 51 beon-gil,

Yeonsu-gu, Incheon

22014, Republic of Korea

US License Number 1996

Marketed by:
Teva Pharmaceuticals USA, Inc.
North Wales, PA 19454